



# SPECTACULAR LANDSCAPE PRODUCTS





*Contents*

# CONTENTS



<b>See it. Feel it. Build it. Live it.</b>	<b>2</b>	Röcka wall & edge double-sided	86
<b>Trend Report</b>	<b>4</b>	Suprema split face wall	87
<b>English Garden</b>	<b>6</b>	Semma wall collection	88
<b>Country Rustic</b>	<b>10</b>		
<b>Contemporary</b>	<b>14</b>		
<b>Polished Casual</b>	<b>18</b>		
<b>Euro Flair</b>	<b>22</b>		
<b>SLABS</b>	<b>26</b>	<b>CAPS</b>	<b>90</b>
Aberdeen slab collection	28	<b>Compatibility chart</b>	<b>92</b>
Blu 60 mm slate collection	30	Aged cap double-sided	94
Blu 60 mm galaxy, polished & smooth slab <b>NEW</b>	32	Architectural double-sided cap <b>NEW</b>	95
Borealis slab collection	34	Bali Travertina pool coping	96
Inca slab	36	Brandon cap <b>NEW</b>	97
Industria slab	37	Bullnose cap & pool coping	98
Maya slab	38	Bullnose grande cap & pool coping <b>NEW</b>	99
Monticello slab collection	39	Escala 3.5" cap	100
Travertina slab collection	40	Graphix reversible cap <b>NEW</b>	101
Para slab collection	42	Piedimonte cap collection double-sided	102
Tux slab collection	43	Portofino cap double-sided	103
		Prima 14" split face & polished cap	104
		Raffinato cap double-sided	105
		Stonedge pillar cap	106
		York cap	107
<b>PAVERS</b>	<b>44</b>	<b>STEPS &amp; OVERLAY SYSTEM</b>	<b>108</b>
Antika paver	46	Borealis step	110
Blu 80 mm slate paver collection	48	Maya step	112
Blu 80 mm galaxy, polished & smooth paver <b>NEW</b>	50	Raffinato step	113
Eva paver	52	Röcka step collection	114
Flagstone paver	53	York step	115
Industria polished, smooth & granitex paver	54	Blu 45 mm slate & smooth overlay system	116
Linea paver collection	56	Venetian slate & smooth overlay system	117
Mista paver collection	57		
San marino paver collection	58	<b>EDGES</b>	<b>118</b>
Victorien paver collection	59	Avignon edge	120
Villagio paver	60	Borealis wall & edge	120
<b>Legacy collection</b>	<b>62</b>	Brandon edge	121
Allegro paver	62	Pietra edge	122
Parisien paver	63	Raffinato pillar & edge	122
		Röcka wall & edge	123
		Tundra edge	123
<b>PERMEABLE PAVERS</b>	<b>64</b>	<b>OUTDOOR FEATURES</b>	<b>124</b>
Antika paver	66	Grill Island	126
Blu 60 & 80 mm galaxy, polished, slate & smooth <b>NEW</b>	67	Manchester Foyer fire place	127
Mista Random paver	68	Manchester Elite pizza oven	128
Victorien 60 mm permeable paver	69	Manchester Rustic pizza oven	128
Pure permeable paver	70	Raffinato pizza oven	129
Villagio permeable paver	71	Forno oven	129
		Prescott fire pit	130
<b>WALL</b>	<b>72</b>	Raffinato fire pit	131
Baltimore wall collection double-sided	74	Valencia fire pit	132
Borealis wall & edge double-sided	75	Brandon fire pit collection <b>NEW</b>	134
Brandon wall collection double-sided <b>NEW</b>	76		
Escala wall double-sided	78	<b>Colour Coordinate</b>	<b>136</b>
Graphix wall double-sided	79	<b>Warranty</b>	<b>138</b>
Manchester wall double-sided	80	<b>Other Products</b>	<b>140</b>
Prescott wall collection double-sided	81		
Mini-Creta Architectural wall collection double-sided	82		
Mini-creta wall collection double-sided	83		
Raffinato wall collection double-sided	84		

#### LEGEND



TECHO-BLOC WARRANTY



DE-ICING SALT RESISTANT



USE VIBRATING PLATE



PERMEABLE PAVERS



STONEDGE WARRANTY



DO NOT USE DE-ICING SALT



DO NOT USE VIBRATING PLATE



STONE TO STONE  
TONE DISTRIBUTION







# SEE IT.

Browse our **product collections**  
for design ideas & inspirations

# FEEL IT.

Find an **authorized dealer** near you  
to see the product & get pricing

# BUILD IT.

Get a **free consultation** with a  
**Techo-Bloc certified installer**

# LIVE IT.

Redefine your landscape  
to redefine the way you live



T E C H O - B L O C . C O M

YouTube Twitter Facebook Instagram





# SPECTACULAR

REDEFINING LANDSCAPE PRODUCTS





TREND REPORT ›



# ENGLISH GARDEN

English Garden

## Timeless Beauty

The English culture is one of traditionalism prizing enduring beauty and practicality. This modernized English Garden uses lush, colourful flora to soften robust & highly-textured walls like the timeless Baltimore & Röcka wall collections. Organics like thyme, grass and moss flow between large slate-textured Aberdeen concrete slabs and cobblestone look-a-like Antika pavers for touches of unbridled beauty that remain true to nature.



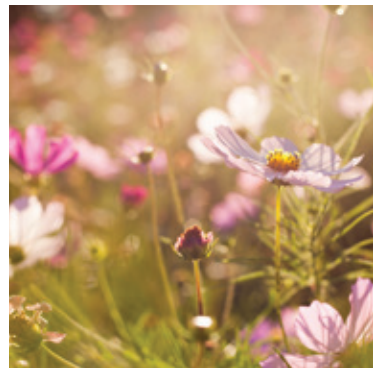
↑ BALTIMORE wall, shale grey



Chair: [gardencottage.com](http://gardencottage.com)



↑ ABERDEEN slab, rock garden brown







↑ RÖCKA wall, rock garden brown



↑ RÖCKA step, rock garden brown  
Furniture: [gardencottage.com](http://gardencottage.com)



↑ ABERDEEN slab, azzurro • PIETRA edge & ANTIKA paver, sandlewood

Furniture: [avency.ca](http://avency.ca)

Refer to the **ENGLISH GARDEN Style Lab** on the next page for more ideas. →



# English Garden



# MAKE IT YOURS

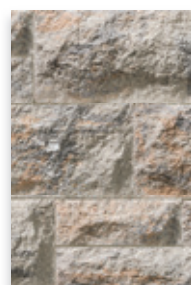
## ACCESSORIES



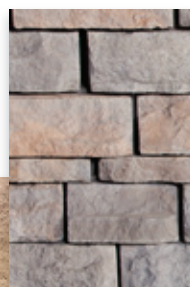
PRESCOTT fire pit



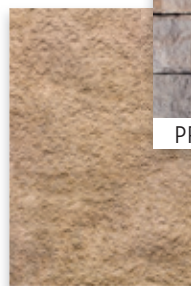
## TEXTURES



BALTIMORE wall



PRESCOTT wall



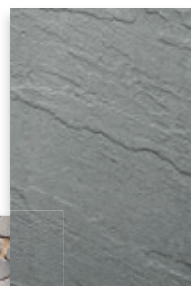
PIETRA edge



RÖCKA step



ANTIKA

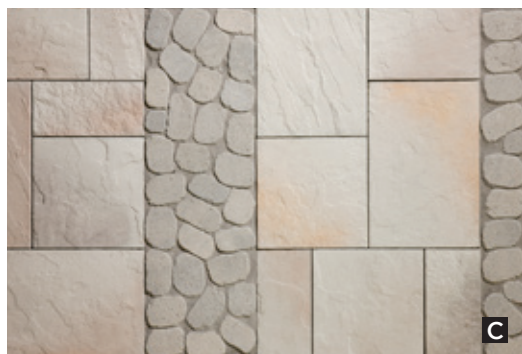


ABERDEEN





# MOSAĪKS



- A** BLU 60 mm slate slab (6" × 13"), shale grey • ANTIKA paver, shale grey
- B** RAFFINATO cap, greyed nickel • SEMMA wall, shale grey
- C** ANTIKA paver, shale grey • INCA slab, victoria

- D** SAN MARINO paver small rectangles, shale grey
- E** ABERDEEN slab (30 × 30), rock garden brown



# COUNTRY TRY RUSTIC

*Country*  
*Rustic*



Chair: [gardencottage.com](http://gardencottage.com)



BOREALIS slab, hazelnut brandy & smoked pine



CUSTOM 180 MM BRANDON fire pit & EVA slab, champlain grey

## *Cottage Vibes*

Nothing embodies rustic like the raw texture of wood. The Borealis stone collection pushes the envelope on traditional landscape products by capturing the look & feel of wood. This splinter-free, weather-resistant and maintenance-free alternative is more durable & more practical than its natural counterpart. Creating elements of elevation the Brandon wall is among the most-versatile and well-suited for rustic outdoor design. Its highly-textured rock face and multi-dimensional hues merge together creating remarkably functional outdoor features for backyard bonfires (Brandon Fire Pit) & early evening cookouts (Brandon wall Pizza Oven).





↑ BRANDON wall, champlain grey



↑ BRANDON wall, champlain grey

Refer to the **COUNTRY RUSTIC Style Lab** on the next page for more ideas. →



# Country Rustic

STYLE  
LAB

# MAKE IT YOURS

## ACCESSORIES



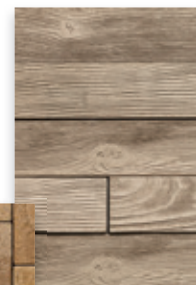
BRANDON SQUARE fire pit



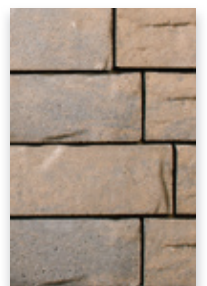
Chair: [gardencottage.com](http://gardencottage.com)



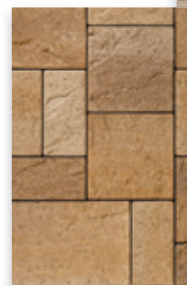
## TEXTURES



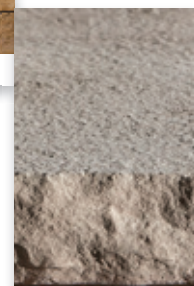
BOREALIS



BRANDON wall



EVA



YORK cap

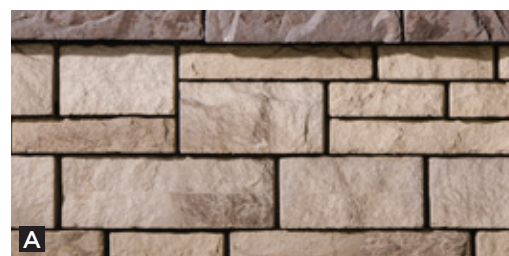


VILLAGIO





## MOSAĪKS



**A** PRESCOTT wall (2.25" and 4.5"), rock garden brown • PORTOFINO cap, chocolate brown

**B** BOREALIS slab, smoked pine and hazelnut brandy

**C** MISTA paver square & random, chestnut brown and harvest gold

**D** BLU 60mm slab slate, champlain grey • BOREALIS slab, smoked pine

**E** VILLAGIO paver, chocolate brown and chestnut brown

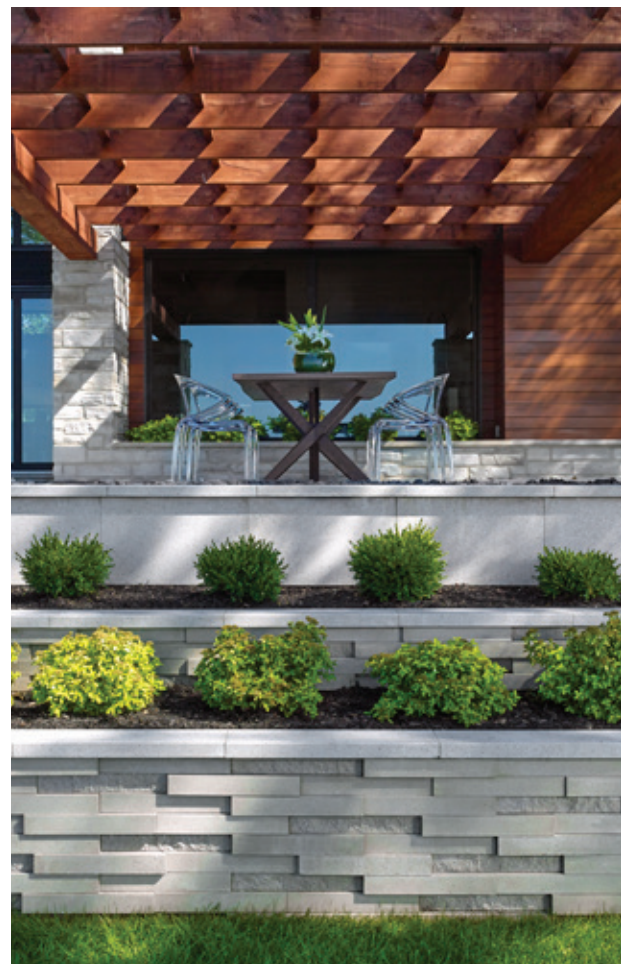


Contemporary

# CON TEM PO RARY



Chair: roche-bobois.com



GRAPHIX wall, greyed nickel • Cap: BLU GRANDE Polished, greyed nickel



RAFFINATO cap, greyed nickel

## Modernscaping: Sleek & Monochromatic

Modernscaping takes a controlled and minimalistic approach to design with clean lines, pristine surfaces and a monochrome colour palette. Techo-Bloc's polished texture, like the Blu Grande polished slab featured here, is buffed for a sleek finish, allowing the fine aggregates within the slab to catch the light and sparkle. The eye-catching Graphix wall uses contrast in depth, form & texture to create a three-dimensional effect. The mix of smooth and chiseled textures are a first & create visual interest perfect for design lovers and those seeking something modern and out of the box.





↑ BLU GRANDE Polished, greyed nickel



↑ BLU GRANDE Polished, greyed nickel



↑ GRAPHIX wall, greyed nickel • Cap: BLU GRANDE Polished, greyed nickel

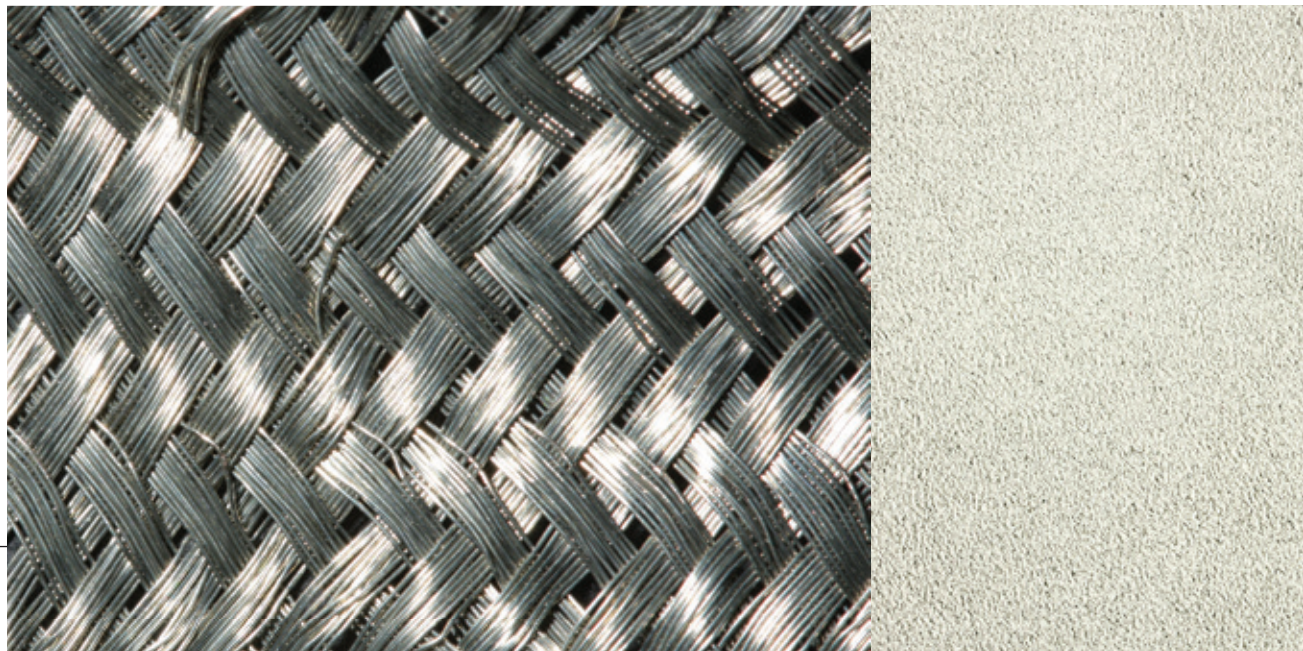
Refer to the **CONTEMPORARY Style Lab** on the next page for more ideas. →



Contemporary



MAKE IT YOURS



ACCESSORIES



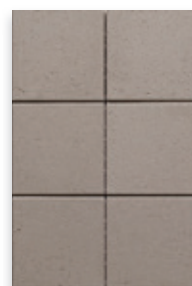
RAFFINATO fire pit



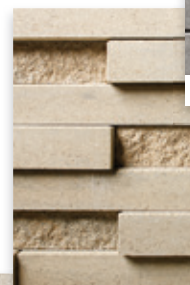
Chair: [roche-bobois.com](http://roche-bobois.com)

Side table: [roche-bobois.com](http://roche-bobois.com)

TEXTURES



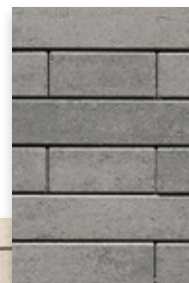
INDUSTRIA smooth



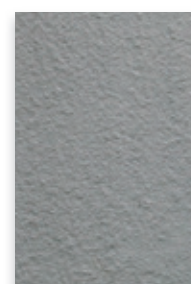
GRAPHIX Wall



RAFFINATO



LINEA

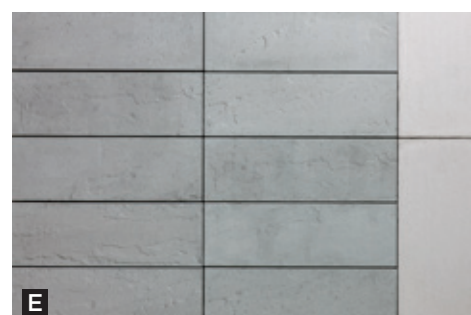
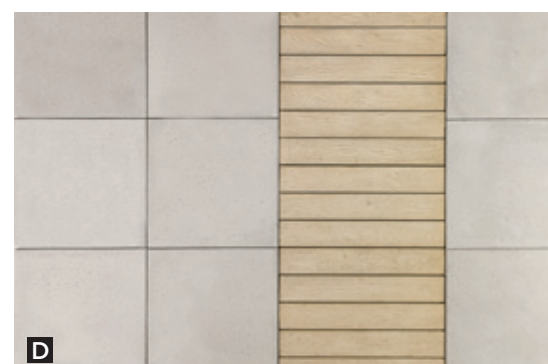


PIEDIMONTE





## MOSAĪKS



**A** RAFFINATO 180 mm smooth wall, onyx black • RAFFINATO 90 mm smooth wall, greyed nickel • RAFFINATO cap, onyx black

**B** BLU 80 mm smooth paver, greyed nickel • LINEA paver small rectangles, onyx black

**C** BLU 60 mm smooth slab, greyed nickel

**D** INDUSTRIA 600 slab, greyed nickel • BOREALIS slab, hazelnut brandy

**E** ABERDEEN slab 10 × 30, azzurro • PIEDIMONTE cap (14" × 30"), riviera





Lounge chair: [roche-bobois.com](http://roche-bobois.com)



Define outdoor spaces through the use of high-contrast bandings and elevations. Pictured here, Travertina slab & Bali Travertina pool coping in Ivory offer a blend of cream tones to achieve a soft colour palette with subtle texture. Deep coloured Antika paver cobblestones in Chocolate Brown are then used to frame the pool with a bold statement banding. The open space is then enclosed by the Mini-Creta Architectural wall & pillar collection's natural rugged stone face and clean lines in creamy Harvest Gold colour. The walls & pillars bring a sense of intimacy to the expansive setting; hemming in the large open space and encouraging casual playfulness with a stone fire pit also made from Mini-Creta Architectural.





↑ FIRE PIT: MINI-CRETA Architectural wall, chestnut brown • PORTOFINO cap, rock garden brown



↑ TRAVERTINA slab, ivory • ANTIKA paver, chestnut brown



↑ MINI-CRETA ARCHITECTURAL wall, chestnut brown

Refer to the **POLISHED CASUAL Style Lab** on the next page for more ideas. →



Polished Casual



MAKE IT YOURS



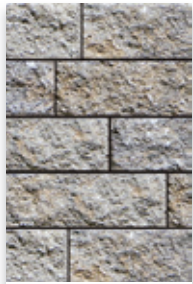
ACCESSORIES



VALENCIA fire pit



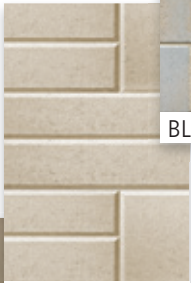
TEXTURES



MINI-CRETA



BLU 60mm smooth



RAFFINATO



TRAVERTINA

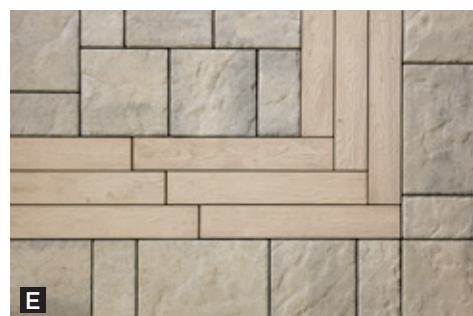
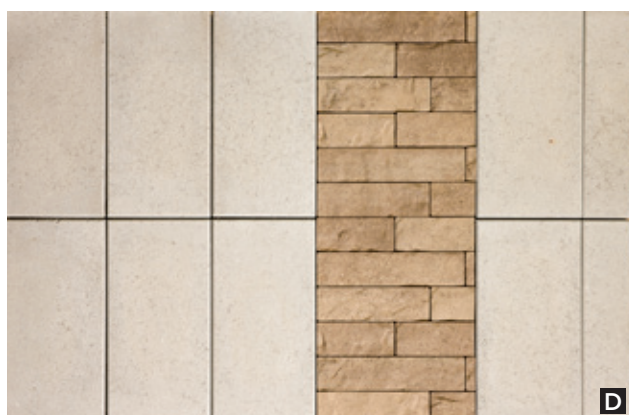
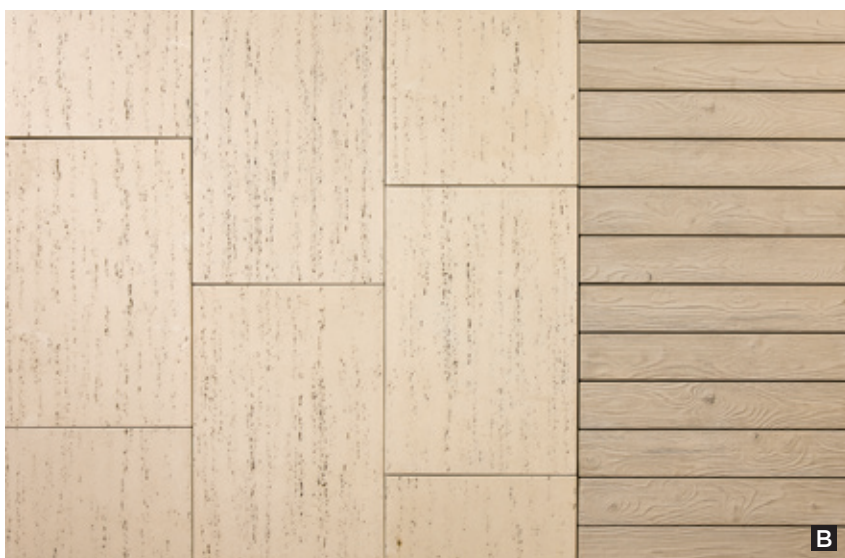


ANTIKA





## MOSAĪKS



**A** BOREALIS slab, hazelnut brandy • ANTIKA paver, chestnut brown

**B** TRAVERTINA 20 × 30 slab, ivory • BOREALIS 5 × 30 slab, hazelnut brandy

**C** PRIMA cap, chestnut brown • RAFFINATO 90 mm wall, greyed nickel • MINI-CRETA wall 3" & 6", chestnut brown

**D** INDUSTRIA 300 × 600 smooth paver, greyed nickel • SAN MARINO paver small rectangles, chestnut brown

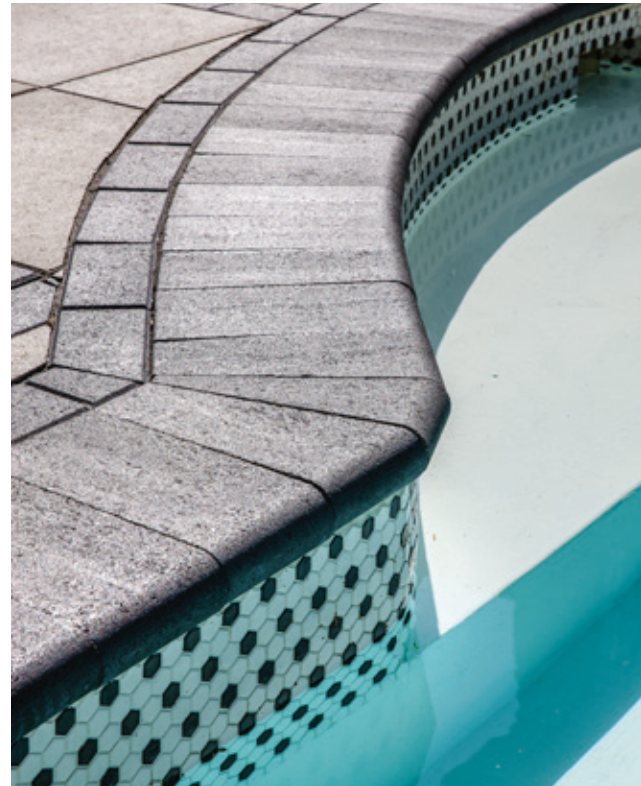
**E** BLU 60 mm slate slab, shale grey • BOREALIS 5 × 30 slab, hazelnut brandy



# Euro Flair



Armchair: [roche-bobois.com](http://roche-bobois.com)



BULLNOSE cap, onyx black



BLU GRANDE polished, greyed nickel

## High-Impact, High-Contrast Design

Euro flair is all about achieving high-impact design through the collision of Old World architecture and avant-guard elements. The Tux outdoor slab collection reinvents the vintage sophistication of Europe's classic black and white tiling by bringing the trend to gallerias and outdoor terraces. The checkerboard mix of the Tux collection in Greyed Nickel and Onyx Black presents an intricate geometric floor pattern that becomes an ideal backdrop for modern black and white decorative accents.





↑ TUX slab, onyx black & greyed nickel



↑ INDUSTRIA slab, greyed nickel • VICTORIEN 60 mm paver, onyx black, BULLNOSE cap, onyx black

Refer to the **EURO FLAIR Style Lab** on the next page for more ideas. →



Euro Flair



MAKE IT YOURS



## ACCESSORIES



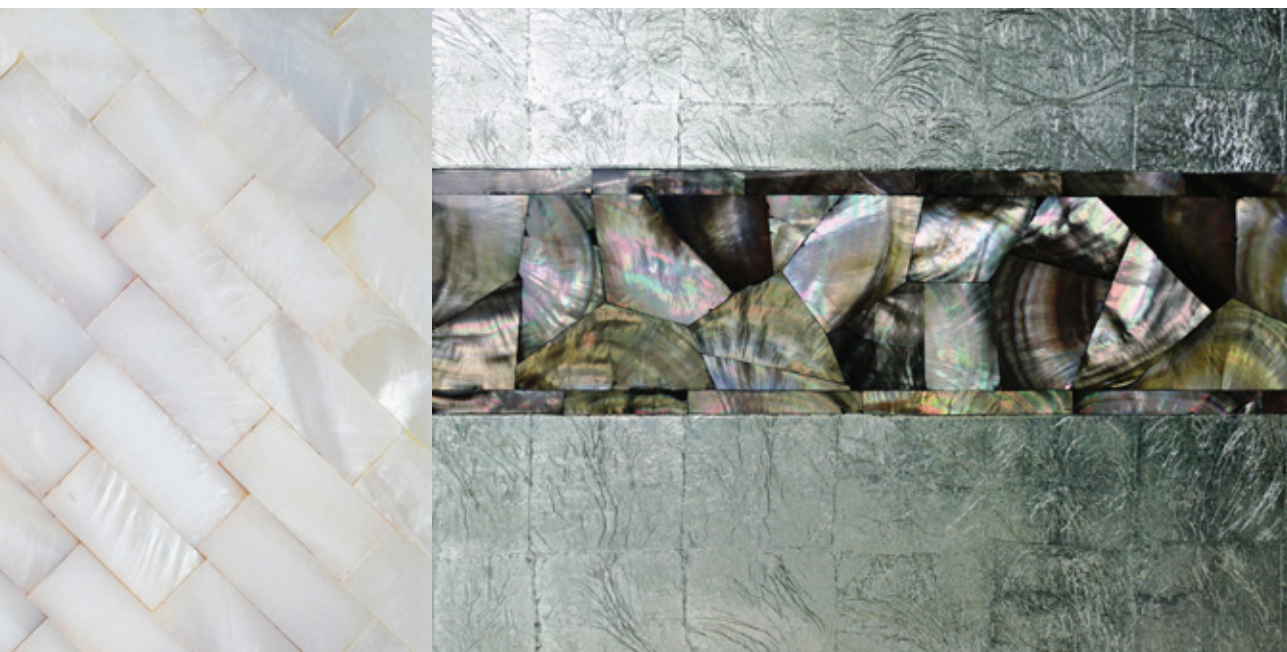
Bar stool: [roche-bobois.com](http://roche-bobois.com)

## TEXTURES

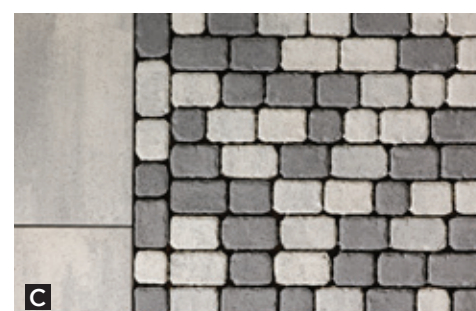
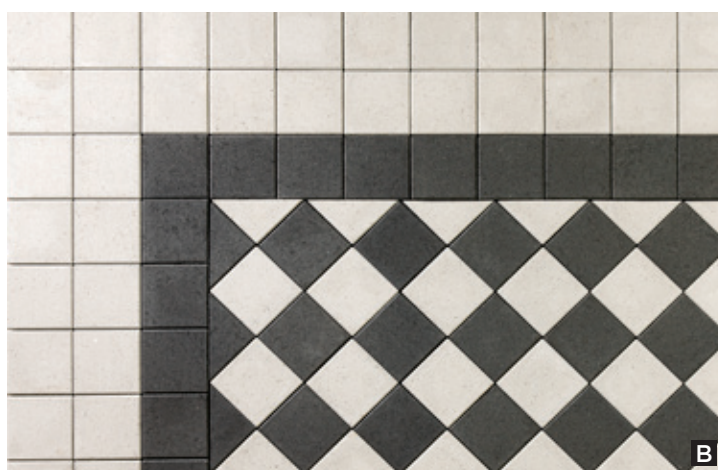


RAFFINATO pizza oven





## MOSAÏKS



**A** BLU 60 mm smooth slab (6" × 13"), greyed nickel and onyx black  
• INDUSTRIA 600 slab, greyed nickel and onyx black

**B** TUX slab, greyed nickel and onyx black

**C** VILLAGIO paver, shale grey and onyx black • BLU GRANDE smooth slab, shale grey

**D** BALTIMORE 180 mm wall, shale grey, brushed pewter • RAFFINATO 180 mm corner smooth, greyed nickel • RAFFINATO cap, onyx black

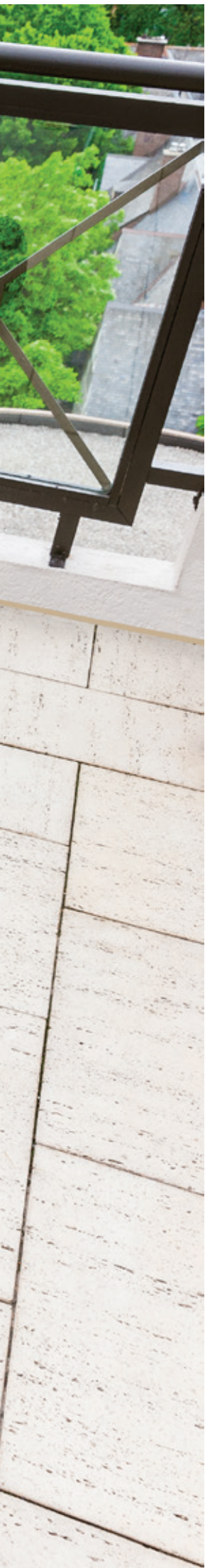
**E** VICTORIEN and ANTIKA pavers, onyx black





TRAVERTINA IVORY





# SLABS

## **MAKE A BIG IMPRESSION.**

The slab collection holds some of Techo-Bloc's most eye-catching stone designs. Crafted using ingredients such as granite and other fine quality aggregates, the slab collection achieves the beauty of natural stone while maintaining the durability of traditional concrete slabs. Its natural beauty is captured by the diversity of its details from varying colour blends, to different surface textures. Designed for light pedestrian traffic only, not suitable for vehicle traffic.







# ABERDEEN

SLAB COLLECTION

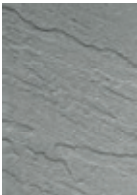


ROCK GARDEN BROWN

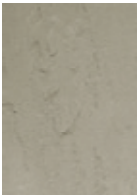


ROCK GARDEN BROWN

TONE  
 DISTRIBUTION  
 HIGH



AZZURRO



OLIVE



ROCK GARDEN  
BROWN



BAJA BEIGE



## ABERDEEN 20" × 10" • 20" × 20"



	(H × D × L)	
A	57 × 508 × 254 mm	2 1/4 × 20 × 10 in
B	57 × 508 × 508 mm	2 1/4 × 20 × 20 in
	6.58 m <sup>2</sup> /pal	70.83 ft <sup>2</sup> /pal

## ABERDEEN 30" × 10"



(H × D × L)	
57 × 762 × 254 mm	2 1/4 × 30 × 10 in
3.29 m <sup>2</sup> /pal	35.42 ft <sup>2</sup> /pal

## ABERDEEN 30" × 20"



(H × D × L)	
57 × 762 × 508 mm	2 1/4 × 30 × 20 in
6.58 m <sup>2</sup> /pal	70.83 ft <sup>2</sup> /pal

## ABERDEEN 30" × 30"



(H × D × L)	
57 × 762 × 762 mm	2 1/4 × 30 × 30 in
9.87 m <sup>2</sup> /pal	106.25 ft <sup>2</sup> /pal



# BLU 60 MM

SLATE COLLECTION



CHAMPLAIN GREY - FURNITURE: AVENCY.CA





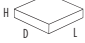


CHAMPLAIN GREY



slate									
	1-2-3	1-2-3	1-2-3	1-2-3	1-2-3	1-2-3	1-2	2	2
	SHALE GREY	CHAMPLAIN GREY	SANDLEWOOD	MOJAVE BEIGE	CHESTNUT BROWN	HARVEST GOLD	AUTUMN RED	CHOCOLATE BROWN*	ONYX BLACK*

\*Chocolate brown & onyx black only available in half-pallets.

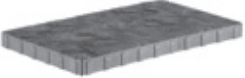
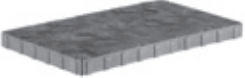
## <sup>1</sup> BLU 60 MM

	A	B	C	
				
	(H × D × L)			
	A	60 × 330 × 165 mm	2 3⁄8 × 13 × 6 1⁄2 in	
	B	60 × 330 × 330 mm	2 3⁄8 × 13 × 13 in	
	C	60 × 330 × 495 mm	2 3⁄8 × 13 × 19 1⁄2 in	
		10.96 m²/pal	116.82 ft²/pal	

## <sup>2</sup> BLU 60 MM (6"×13")

	(H × D × L)	
	60 × 330 × 165 mm	2 3⁄8 × 13 × 6 1⁄2 in
	10.78 m²/pal	116.05 ft²/pal
	*5.88 m²/half pal	*63.30 ft²/half pal

## <sup>3</sup> BLU GRANDE

	(H × D × L)	
	60 × 495 × 825 mm	2 3⁄8 × 19 1⁄2 × 32 1⁄2 in
	8.98 m²/pal	96.71 ft²/pal











BLU 60 MM SMOOTH GREYED NICKEL



# BLU 60 mm

GALAXY, POLISHED & SMOOTH SLAB COLLECTION



BLU GRANDE POLISHED GREYED NICKEL - FURNITURE: ROCHE-BOBOIS.COM



BLU GRANDE POLISHED GREYED NICKEL

												galaxy NEW TEXTURE
												polished
												smooth
									</			



# BOREALIS

SLAB COLLECTION





SAUVIGNON OAK      HAZELNUT BRANDY      SMOKED PINE

TONE DISTRIBUTION  
HIGH

**BOREALIS SLAB 5"×30"**



H

D

L

(H × D × L)  
57 × 127 × 762 mm    2 1/4 × 5 × 30 in  
6.58 m<sup>2</sup>/pal    70.83 ft<sup>2</sup>/pal  
68 units/pal

**BOREALIS SLAB 10"×30"**



(H × D × L)  
57 × 254 × 762 mm    2 1/4 × 10 × 30 in  
6.58 m<sup>2</sup>/pal    70.83 ft<sup>2</sup>/pal  
34 units/pal







# INCA

SLAB



BAJA BEIGE - FURNITURE: AGENCY.CA






TONE

DISTRIBUTION

MEDIUM




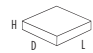
BAJA BEIGE

CORAL SANDS

VICTORIA

RIVIERA

INCA

	A	B	C
			
	(H × D × L)		
A	51 × 381 × 191 mm	2 × 15 × 7 1/2 in	
B	51 × 381 × 381 mm	2 × 15 × 15 in	
C	51 × 381 × 572 mm	2 × 15 × 22 1/2 in	
	6.18 m²/pal	66.5 ft²/pal	



# INDUSTRIA

SLAB

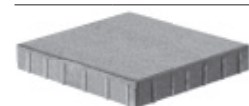


SMOOTH GREYED NICKEL

ON ORDER						granitex
ONYX BLACK, GREYED NICKEL AND BEIGE CREAM <b>IN STOCK</b>						smooth
ON ORDER						polished
	GREY	CHARCOAL	ONYX BLACK	GREYED NICKEL	BEIGE CREAM	

A minimum pre-order of 2500 ft<sup>2</sup> is required for on order items.

## INDUSTRIA 600 SERIES



(H × D × L)  
60 × 600 × 600 mm 23<sup>5</sup>/<sub>8</sub> × 23<sup>5</sup>/<sub>8</sub> × 23<sup>5</sup>/<sub>8</sub> in  
5.04 m<sup>2</sup> /pal 54.25 ft<sup>2</sup> /pal



For an authentic look, each colour option is composed of a variety of darker & lighter tones. Natural ingredients such as granite are present within the recipe to allow for a range in tones, veining and textures from one stone to another. Colour samples for reference only. Actual product colours may vary.

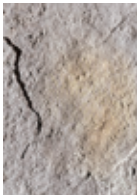


# MAYA

SLAB



VICTORIA



RIVIERA



BAJA BEIGE

TONE  
DISTRIBUTION  
MEDIUM

## MAYA SLAB



A - F

(H × D × L)  
57 × 584 × 788 mm    2 1/4 × 23 × 31 in  
7.82 m<sup>2</sup>/pal    84.15 ft<sup>2</sup>/pal  
17 units/pal

Stonedge  
COLLECTION





# MONTICELLO

SLAB COLLECTION



CHOCOLATE BROWN, AZZURRO, OLIVE - FURNITURE: AGENCY.CA

TONE  
 DISTRIBUTION  
 HIGH



OLIVE



ROCK GARDEN  
BROWN



CHOCOLATE  
BROWN



AZZURRO



## MONTICELLO 20" × 10" • 20" × 20"



	(H × D × L)	
A	57 × 508 × 254 mm	2 1/4 × 20 × 10 in
B	57 × 508 × 508 mm	2 1/4 × 20 × 20 in
	6.58 m <sup>2</sup> /pal	70.83 ft <sup>2</sup> /pal

## MONTICELLO 20" × 30"



(H × D × L)	
57 × 508 × 762 mm	2 1/4 × 20 × 30 in
6.58 m <sup>2</sup> /pal	70.83 ft <sup>2</sup> /pal







# TRAVERTINA

## SLAB COLLECTION

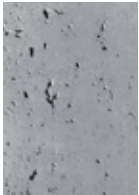


IVORY

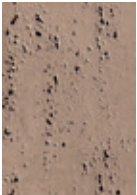


IVORY

TONE  
 DISTRIBUTION  
 HIGH



RIVIERA



ROCK GARDEN  
BROWN



IVORY



### TRAVERTINA 20" × 10" • 20" × 20"

	A	B
	(H × D × L)	(H × D × L)
A	57 × 508 × 254 mm	2 1/4 × 20 × 10 in
B	57 × 508 × 508 mm	2 1/4 × 20 × 20 in
	6.59 m <sup>2</sup> /pal	70.89 ft <sup>2</sup> /pal

### TRAVERTINA 20" × 30"

(H × D × L)
57 × 508 × 762 mm
2 1/4 × 20 × 30 in
6.59 m <sup>2</sup> /pal
70.89 ft <sup>2</sup> /pal

### TRAVERTINA 30" × 30"

(H × D × L)
57 × 762 × 762 mm
2 1/4 × 30 × 30 in
9.87 m <sup>2</sup> /pal
106.25 ft <sup>2</sup> /pal

For an authentic look, each colour option is composed of a variety of darker & lighter tones. Natural ingredients such as granite are present within the recipe to allow for a range in tones, veining and textures from one stone to another. Colour samples for reference only. Actual product colours may vary.



# PARA

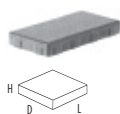
SLAB COLLECTION



GREYED NICKEL



PARA 500 × 250 SMOOTH & POLISHED



(H × D × L)  
60 × 500 × 250 mm    2 3⁄8 × 19 11⁄16 × 9 3⁄16 in  
11 m²/pal                    118.40 ft²/pal

PARA 500 × 500 SMOOTH & POLISHED



(H × D × L)  
60 × 500 × 500 mm    2 3⁄8 × 19 11⁄16 × 9 11⁄16 in  
11 m²/pal                    118.40 ft²/pal

PARA 500 × 750 SMOOTH & POLISHED



(H × D × L)  
60 × 500 × 750 mm    2 3⁄8 × 19 11⁄16 × 29 1⁄2 in  
8,25 m²/pal                    88.40 ft²/pal





# TUX

## SLAB COLLECTION



TUX 12" × 12" GREYED NICKEL, ONYX BLACK



ONYX BLACK



GREYED NICKEL



BEIGE CREAM

### TUX 12" × 12"



(H × D × L)	
60 × 300 × 300 mm	2 3/8 × 11 5/16 × 11 5/16 in
11.88 m <sup>2</sup> /pal	127.88 ft <sup>2</sup> /pal
132 units/pal	

### TUX 12" × 24"



(H × D × L)	
60 × 300 × 600 mm	2 3/8 × 11 5/16 × 23 5/8 in
10.80 m <sup>2</sup> /pal	116.25 ft <sup>2</sup> /pal
60 units/pal	



For an authentic look, each colour option is composed of a variety of darker & lighter tones. Natural ingredients such as granite are present within the recipe to allow for a range in tones, veining and textures from one stone to another. Colour samples for reference only. Actual product colours may vary.





INDUSTRIA PAVER GREYED NICKEL





# PAVERS

## THE POWER OF INTERLOCKING.

All Techo-Bloc pavers are interlocking, designed to withstand vehicle traffic, salt-resistant and backed by a lifetime transferable warranty. They contain colour all the way through to allow for a natural-wear that won't have colour fade over time. It is our long-standing mission to maintain our position as world leaders for quality in the manufacture of landscape pavers.



# ANTIKA

PAVER



SHALE GREY - FURNITURE BY: AVENCY.CA



SHALE GREY



ONYX BLACK      CHOCOLATE BROWN      CHESTNUT BROWN      SANDLEWOOD      SHALE GREY

## ANTIKA



(H × D × L)  
Various sizes, height of 60 mm    2 3/8 in  
8.10 m<sup>2</sup>/pal    87 ft<sup>2</sup>/pal



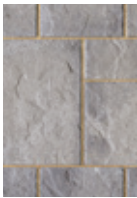






# BLU 80 MM

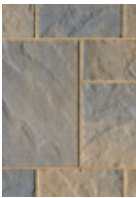
## SLATE PAVER COLLECTION



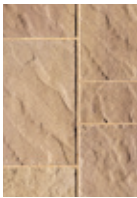
1-2  
SHALE GREY



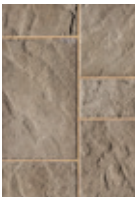
1-2  
CHAMPLAIN  
GREY



1-2  
SANDLEWOOD



1-2  
MOJAVE BEIGE



1-2  
CHESTNUT  
BROWN



1-2  
HARVEST GOLD



1  
AUTUMN RED



2  
CHOCOLATE  
BROWN



2  
ONYX BLACK

### <sup>1</sup> BLU 80 MM

A	B	C
(H × D × L)		
A 80 × 330 × 165 mm	3 1/8 × 13 × 6 1/2 in	
B 80 × 330 × 330 mm	3 1/8 × 13 × 13 in	
C 80 × 330 × 495 mm	3 1/8 × 13 × 19 1/2 in	
7.90 m <sup>2</sup> /pal	84.96 ft <sup>2</sup> /pal	

### <sup>2</sup> BLU 80 MM (6" × 13")

(H × D × L)	
80 × 330 × 165 mm	3 1/8 × 13 × 6 1/2 in
7.84 m <sup>2</sup> /pal	84.40 ft <sup>2</sup> /pal







CHESTNUT BROWN





SMOOTH SHALE GREY



# BLU 80 MM

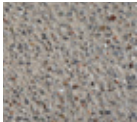

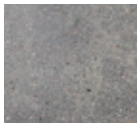

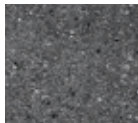
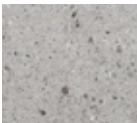


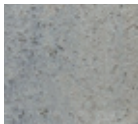
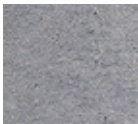

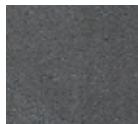


GALAXY, POLISHED & SMOOTH PAVER COLLECTION






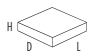
SMOOTH SHALE GREY




SMOOTH SHALE GREY

								galaxy NEW TEXTURE
						1-2	1-2	
								polished
		1-2	1-2	1-2	1-2	1-2		
								smooth
2	1-2	1-2	1-2	1-2	1-2	1-2		
CHOCOLATE BROWN	CHAMPLAIN GREY	SHALE GREY	CHESTNUT BROWN	ONYX BLACK	GREYED NICKEL	BEIGE CREAM		

## <sup>1</sup>BLU 80 MM

A	B	C
		
	(H × D × L)	
A	80 × 330 × 165 mm	3 1/8 × 13 × 6 1/2 in
B	80 × 330 × 330 mm	3 1/8 × 13 × 13 in
C	80 × 330 × 495 mm	3 1/8 × 13 × 19 1/2 in
	7.90 m <sup>2</sup> /pal	84.96 ft <sup>2</sup> /pal

## <sup>2</sup>BLU 80 MM (6" × 13")

	
(H × D × L)	
80 × 330 × 165 mm	3 1/8 × 13 × 6 1/2 in
7.84 m <sup>2</sup> /pal	84.40 ft <sup>2</sup> /pal



For an authentic look, each colour option is composed of a variety of darker & lighter tones. Natural ingredients such as granite are present within the recipe to allow for a range in tones, veining and textures from one stone to another. Colour samples for reference only. Actual product colours may vary.



# EVA

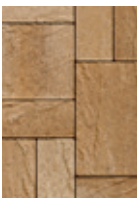
PAVER



SANDLEWOOD - FURNITURE - GARDENCOTTAGE.COM



MOJAVE BEIGE



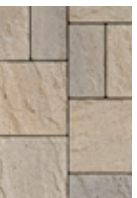
HARVEST GOLD



CHESTNUT  
BROWN



SANDLEWOOD



CHAMPLAIN  
GREY



SHALE GREY

EVA

A	B	C
(H × D × L)		
A 60 × 223 × 112 mm	2 3⁄8 × 8 3⁄4 × 4 3⁄8 in	
B 60 × 223 × 223 mm	2 3⁄8 × 8 3⁄4 × 8 3⁄4 in	
C 60 × 223 × 335 mm	2 3⁄8 × 8 3⁄4 × 13 3⁄16 in	
12.31 m²/pal	132.48 ft²/pal	





# FLAGSTONE

PAVER



CHAMPLAIN GREY



CHAMPLAIN  
GREY



SANDLEWOOD



CHESTNUT  
BROWN



HARVEST GOLD



MOJAVE BEIGE

## FLAGSTONE

	A - E	F	G
	(H × D × L)		
A - E	80 × 411 × 602 mm	3 1/8 × 16 3/16 × 23 7/16 in	
F	80 × 411 × 301 mm	3 1/8 × 16 3/16 × 11 7/8 in	
G	80 × 354 × 301 mm	3 1/8 × 13 15/16 × 11 7/8 in	
	7.58 m <sup>2</sup> /pal	81.60 ft <sup>2</sup> /pal	







SMOOTH 600 × 100 GREYED NICKEL



# INDUSTRIA

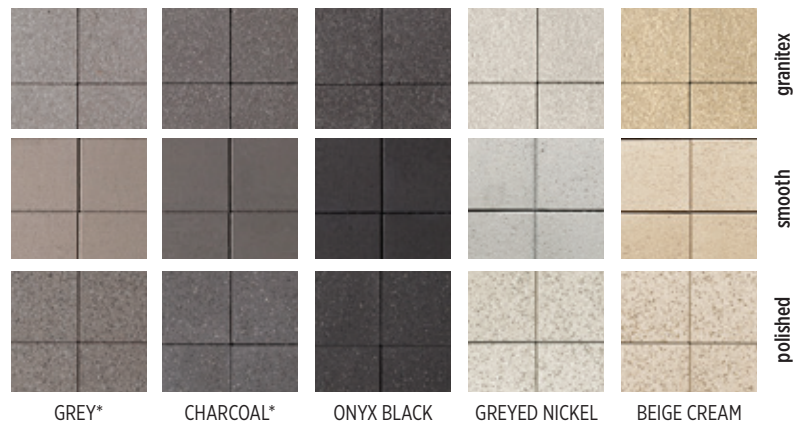
POLISHED, SMOOTH & GRANITEX PAVER COLLECTION



SMOOTH 600×100 & 600×600 GREYED NICKEL



SMOOTH 600 × 100 GREYED NICKEL



A minimum pre-order of 2500 ft<sup>2</sup> is required on on order items.

## 200 SERIES: PRE-ORDER ONLY - MIN. 1000 FT<sup>2</sup>



(H × D × L)

100 × 200 × 200 mm  $3\frac{5}{16} \times 7\frac{7}{8} \times 7\frac{7}{8}$  in  
5.60 m<sup>2</sup>/pal 60.28 ft<sup>2</sup>/pal



(H × D × L)

100 × 200 × 400 mm  $3\frac{5}{16} \times 7\frac{7}{8} \times 15\frac{3}{4}$  in  
5.60 m<sup>2</sup>/pal 60.28 ft<sup>2</sup>/pal

## 300 SERIES: PRE-ORDER ONLY - MIN. 1000 FT<sup>2</sup>



(H × D × L)

100 × 300 × 100 mm  $3\frac{5}{16} \times 11\frac{5}{16} \times 3\frac{5}{16}$  in  
4.20 m<sup>2</sup>/pal 45.21 ft<sup>2</sup>/pal



(H × D × L)

100 × 300 × 150 mm  $3\frac{5}{16} \times 11\frac{5}{16} \times 5\frac{7}{8}$  in  
6.62 m<sup>2</sup>/pal 71.20 ft<sup>2</sup>/pal



(H × D × L)

100 × 300 × 300 mm  $3\frac{5}{16} \times 11\frac{5}{16} \times 11\frac{5}{16}$  in  
7.56 m<sup>2</sup>/pal 81.38 ft<sup>2</sup>/pal

## 600 SERIES: PRE-ORDER ONLY - MIN. 1000 FT<sup>2</sup>



(H × D × L)

100 × 600 × 200 mm  $3\frac{5}{16} \times 23\frac{5}{8} \times 7\frac{7}{8}$  in  
4.20 m<sup>2</sup>/pal 45.21 ft<sup>2</sup>/pal



(H × D × L)

100 × 600 × 600 mm  $3\frac{5}{16} \times 23\frac{5}{8} \times 23\frac{5}{8}$  in  
5.04 m<sup>2</sup>/pal 54.25 ft<sup>2</sup>/pal

## 600 SERIES

Exception: greyed nickel and onyx black in smooth are **in stock** items.



(H × D × L)

100 × 600 × 100 mm  $3\frac{5}{16} \times 23\frac{5}{8} \times 3\frac{5}{16}$  in  
4.20 m<sup>2</sup>/pal 45.21 ft<sup>2</sup>/pal



(H × D × L)

100 × 600 × 300 mm  $3\frac{5}{16} \times 23\frac{5}{8} \times 11\frac{5}{16}$  in  
5.04 m<sup>2</sup>/pal 54.25 ft<sup>2</sup>/pal



For an authentic look, each colour option is composed of a variety of darker & lighter tones. Natural ingredients such as granite are present within the recipe to allow for a range in tones, veining and textures from one stone to another. Colour samples for reference only. Actual product colours may vary.



# LINEA

## PAVER COLLECTION



SHALE GREY



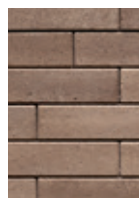
SHALE GREY



CHAMPLAIN  
GREY



SANDEWOOD



CHESTNUT  
BROWN



CHOCOLATE  
BROWN\*



ONYX BLACK\*

### LINEA SMALL RECTANGLES

	A	B	C
(H × D × L)			
A	100 × 100 × 225 mm	3 15/16 × 3 15/16 × 8 7/8 in	
B	100 × 100 × 325 mm	3 15/16 × 3 15/16 × 12 15/16 in	
C	100 × 100 × 425 mm	3 15/16 × 3 15/16 × 16 3/4 in	
	7.51 m <sup>2</sup> /pal	80.81 ft <sup>2</sup> /pal	
	*4.29 m <sup>2</sup> /half pal	*46.18 ft <sup>2</sup> /half pal	

### LINEA LARGE RECTANGLES

	A	B	C
(H × D × L)			
A	100 × 150 × 225 mm	3 15/16 × 5 7/8 × 8 7/8 in	
B	100 × 150 × 325 mm	3 15/16 × 5 7/8 × 12 15/16 in	
C	100 × 150 × 425 mm	3 15/16 × 5 7/8 × 16 3/4 in	
	7.17 m <sup>2</sup> /pal	77.14 ft <sup>2</sup> /pal	
	*4.10 m <sup>2</sup> /half pal	*44.08 ft <sup>2</sup> /half pal	

\* Onyx black and chocolate brown are only available in half-pallets.





# MISTA

PAVER COLLECTION



SHALE GREY



ONYX BLACK  
1



CHOCOLATE  
BROWN  
1



AUTUMN RED  
2-3



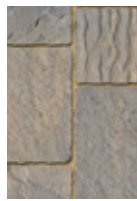
CHESTNUT  
BROWN  
1-2-3



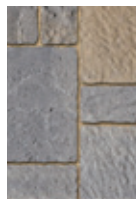
HARVEST GOLD  
1-2-3



MOJAVE BEIGE  
2-3



SANDLEWOOD  
2-3

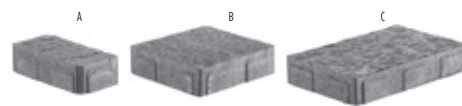


CHAMPLAIN  
GREY  
1-2-3



SHALE GREY  
1-2-3

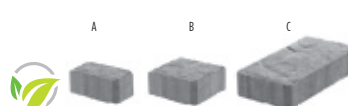
## MISTA GRANDE<sup>1</sup>



(H × D × L)

A	80 × 300 × 150 mm	3 1/8 × 11 13/16 × 5 7/8 in
B	80 × 300 × 300 mm	3 1/8 × 11 13/16 × 11 13/16 in
C	80 × 300 × 450 mm	3 1/8 × 11 13/16 × 17 1/16 in
	8.65 m <sup>2</sup> /pal	93.04 ft <sup>2</sup> /pal

## MISTA RANDOM PERMEABLE<sup>2</sup>



(H × D × L)

A	65 × 200 × 100 mm	2 9/16 × 7 7/8 × 3 15/16 in
B	65 × 200 × 200 mm	2 9/16 × 7 7/8 × 7 7/8 in
C	65 × 200 × 300 mm	2 9/16 × 7 7/8 × 11 13/16 in
	10.80 m <sup>2</sup> /pal	116.20 ft <sup>2</sup> /pal

## MISTA SQUARE<sup>3</sup>



(H × D × L)

65 × 300 × 300 mm	2 9/16 × 11 13/16 × 11 13/16 in
10.80 m <sup>2</sup> /pal	116.20 ft <sup>2</sup> /pal



For an authentic look, each colour option is composed of a variety of darker & lighter tones. Natural ingredients such as granite are present within the recipe to allow for a range in tones, veining and textures from one stone to another. Colour samples for reference only. Actual product colours may vary.



# SAN MARINO

PAVER COLLECTION



ONYX BLACK



ONYX BLACK\*



CHOCOLATE BROWN\*



CHESTNUT BROWN



SANDLEWOOD



CHAMPLAIN GREY



SHALE GREY

### SAN MARINO SMALL RECTANGLES

	A	B	C
	(H × D × L)		
A	100 × 100 × 225 mm	3 15/16 × 3 15/16 × 8 7/8 in	
B	100 × 100 × 325 mm	3 15/16 × 3 15/16 × 12 15/16 in	
C	100 × 100 × 425 mm	3 15/16 × 3 15/16 × 16 3/4 in	
	7.51 m <sup>2</sup> /pal	80.81 ft <sup>2</sup> /pal	
	*4.29 m <sup>2</sup> /half pal	*46.18 ft <sup>2</sup> /half pal	

### SAN MARINO LARGE RECTANGLES

	A	B	C
	(H × D × L)		
A	100 × 150 × 225 mm	3 15/16 × 5 7/8 × 8 7/8 in	
B	100 × 150 × 325 mm	3 15/16 × 5 7/8 × 12 15/16 in	
C	100 × 150 × 425 mm	3 15/16 × 5 7/8 × 16 3/4 in	
	7.17 m <sup>2</sup> /pal	77.14 ft <sup>2</sup> /pal	
	*4.10 m <sup>2</sup> /half pal	*44.08 ft <sup>2</sup> /half pal	

\* Onyx black and chocolate brown are only available in half-pallets.





# VICTORIEN

PAVER COLLECTION



MOJAVE BEIGE



GREY



SHALE GREY



SANDLEWOOD



MOJAVE BEIGE



RED & BLACK



CHOCOLATE BROWN



ONYX BLACK

VICTORIEN 60 MM



(H × D × L)  
60 × 108 × 216 mm    2 3⁄8 × 4 1⁄4 × 8 1⁄2 in  
11.50 m²/pal    123.70 ft²/pal









# VILLAGIO

PAVER



ONYX BLACK



SHALE GREY - ONYX BLACK



ONYX BLACK\*



CHOCOLATE BROWN\*



HARVEST GOLD



CHESTNUT BROWN



MOJAVE BEIGE



SANDLEWOOD



CHAMPLAIN GREY



SHALE GREY



For an authentic look, each color option is composed of a variety of darker & lighter tones. Natural ingredients such as granite are present within the recipe to allow for a range in tones, veining and textures from one stone to another. Color samples for reference only. Actual product colors may vary.

# VILLAGIO

(H × D × L)

A 60 × 130 × 130 mm  $2\frac{3}{8} \times 5\frac{1}{8} \times 5\frac{1}{8}$  in

B 60 × 130 × 160 mm  $2\frac{3}{8} \times 5\frac{1}{8} \times 6\frac{5}{16}$  in

C 60 × 130 × 185 mm  $2\frac{3}{8} \times 5\frac{1}{8} \times 7\frac{5}{16}$  in

D 60 × 130 × 215 mm  $2\frac{3}{8} \times 5\frac{1}{8} \times 8\frac{7}{16}$  in

10.88 m<sup>2</sup>/pal 117 ft<sup>2</sup>/pal

\*4.94 m<sup>2</sup>/half pal \*53.18 ft<sup>2</sup>/half pal

\* Onyx black and chocolate brown are only available in half-pallets.



# LEGACY COLLECTION



SANDLEWOOD

# ALLEGRO

PAVER



SHALE GREY



CHAMPLAIN  
GREY



SANDLEWOOD



MOJAVE BEIGE



CHESTNUT  
BROWN



HARVEST GOLD



AUTUMN RED

## ALLEGRO



(H × D × L)

A	60 × 135 × 119 mm	2 3⁄8 × 5 1⁄16 × 4 7⁄16 in
B	60 × 135 × 170 mm	2 3⁄8 × 5 1⁄16 × 6 7⁄16 in
C	60 × 135 × 198 mm	2 3⁄8 × 5 1⁄16 × 7 7⁄16 in
D	60 × 135 × 238 mm	2 3⁄8 × 5 1⁄16 × 9 3⁄8 in
	12.06 m²/pal	129.80 ft²/pal





CHESTNUT BROWN

# PARISIEN

PAVER



CHAMPLAIN  
GREY



SHALE GREY



SANDLEWOOD



CHESTNUT  
BROWN



CHOCOLATE  
BROWN\*



ONYX BLACK\*

\* Onyx black & chocolate brown are only available for Parisien Rectangle.

## PARISIEN CIRCLE



(H × D × L)

Various sizes, height of 60 mm

Circle diameter 2.41 m

4.70 m<sup>2</sup>/pal

2 3/8

7' 11"

50.70 ft<sup>2</sup>/pal

## PARISIEN SQUARE



(H × D × L)

60 × 158 × 158 mm

11.54 m<sup>2</sup>/pal

2 3/8 × 6 1/4 × 6 1/4 in

124.20 ft<sup>2</sup>/pal

## PARISIEN RECTANGLE



(H × D × L)

60 × 158 × 238 mm

12.47 m<sup>2</sup>/pal

2 3/8 × 6 1/4 × 9 3/8 in

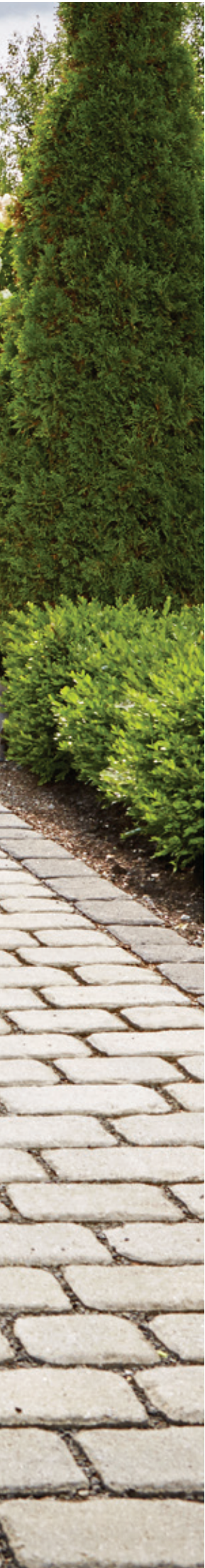
134.20 ft<sup>2</sup>/pal





VILLAGIO SHALE GREY





# PERMEABLE PAVERS

## **BE ECO-CONSCIOUS.**

Techo-Bloc offers various eco-conscious and cost-effective pavements for residential and commercial stormwater management. These permeable pavements were designed to allow for the proper percolation of surface water into the ground; reducing the risk and severity of flooding, eliminating puddles, speeding up the melting process of snow, reducing winter ice hazards and cost-savings on de-icing salt and snow removal. Many municipalities encourage the use of permeable pavements by offering tax incentives and utility fee reductions. Check with your local government to see if they offer and local incentives for permeable pavements.



# ANTIKA

PAVER



SHALE GREY



ONYX BLACK



CHOCOLATE BROWN



CHESTNUT BROWN



SANDLEWOOD



SHALE GREY

## ANTIKA



(H × D × L)

Various sizes, height of 60 mm 2 3/8 in  
8.10 m<sup>2</sup>/pal 87 ft<sup>2</sup>/pal





# BLU 60 & 80 mm




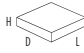
GALAXY, POLISHED, SLATE & SMOOTH



CHESTNUT BROWN




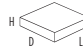
FOR COLOUR AVAILABILITY SEE **PAGES 30 TO 33**

## BLU 60 mm

A	B	C
		
	(H × D × L)	
A	60 × 330 × 165 mm	2 3/8 × 13 × 6 1/2 in
B	60 × 330 × 330 mm	2 3/8 × 13 × 13 in
C	60 × 330 × 495 mm	2 3/8 × 13 × 19 1/2 in
	10.96 m <sup>2</sup> /pal	116.82 ft <sup>2</sup> /pal

FOR COLOUR AVAILABILITY SEE **PAGES 48 TO 51**

## BLU 80 mm

A	B	C
		
	(H × D × L)	
A	80 × 330 × 165 mm	3 1/8 × 13 × 6 1/2 in
B	80 × 330 × 330 mm	3 1/8 × 13 × 13 in
C	80 × 330 × 495 mm	3 1/8 × 13 × 19 1/2 in
	7.90 m <sup>2</sup> /pal	84.96 ft <sup>2</sup> /pal





# MISTA RANDOM

PAVER



MOJAVE BEIGE



AUTUMN RED



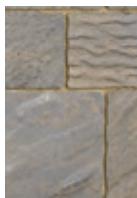
CHESTNUT BROWN



HARVEST GOLD



MOJAVE BEIGE



SANDLEWOOD

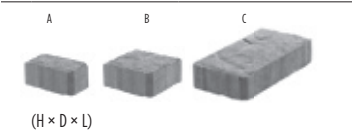


CHAMPLAIN GREY



SHALE GREY

MISTA RANDOM PERMEABLE



A	65 × 200 × 100 mm	2 9/16 × 7 7/8 × 3 15/16 in
B	65 × 200 × 200 mm	2 9/16 × 7 7/8 × 7 7/8 in
C	65 × 200 × 300 mm	2 9/16 × 7 7/8 × 11 13/16 in
	10.80 m <sup>2</sup> /pal	116.20 ft <sup>2</sup> /pal





# VICTORIEN 60 MM

PERMEABLE PAVER



CHESTNUT BROWN



SHALE GREY



CHESTNUT BROWN



## VICTORIEN 60 MM PERMEABLE



(H × D × L)	
60 × 108 × 216 mm	2 3⁄8 × 4 1⁄4 × 8 1⁄2 in
10.24 m²/pal	110.22 ft²/pal



# PURE

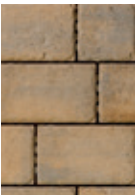
PERMEABLE PAVER



SANDLEWOOD



CHESTNUT  
BROWN



SANDLEWOOD



CHAMPLAIN  
GREY



SHALE GREY

## PURE

A	B	C
(H × D × L)		
A 80 × 229 × 229 mm	3 1/8 × 9 × 9 in	
B 80 × 229 × 305 mm	3 1/8 × 9 × 12 in	
C 80 × 229 × 381 mm	3 1/8 × 9 × 15 in	
8.36 m <sup>2</sup> /pal	90 ft <sup>2</sup> /pal	





# VILLAGIO

PERMEABLE PAVER



SHALE GREY - FURNITURE : AGENCY.CA



ONYX BLACK\*



CHOCOLATE BROWN\*



HARVEST GOLD



CHESTNUT BROWN



MOJAVE BEIGE



SANDLEWOOD



CHAMPLAIN GREY



SHALE GREY

## VILLAGIO



	(H × D × L)	
A	60 × 130 × 130 mm	2 3⁄8 × 5 1⁄8 × 5 1⁄8 in
B	60 × 130 × 160 mm	2 3⁄8 × 5 1⁄8 × 6 5⁄16 in
C	60 × 130 × 185 mm	2 3⁄8 × 5 1⁄8 × 7 5⁄16 in
D	60 × 130 × 215 mm	2 3⁄8 × 5 1⁄8 × 8 7⁄16 in
	10.88 m²/pal	117 ft²/pal
	*4.94 m²/half pal	*53.18 pi²/half pal

\* Onyx black & chocolate brown are only available in half-pallets



For an authentic look, each colour option is composed of a variety of darker & lighter tones. Natural ingredients such as granite are present within the recipe to allow for a range in tones, veining and textures from one stone to another. Colour samples for reference only. Actual product colours may vary.





GRAPHIX WALL GREYED NICKEL - FURNITURE: ROCHE-BOBOIS.COM





# WALLS

## ELEVATE YOUR DESIGN.

Designing your outdoor landscape goes beyond cladding the ground with something beautiful; it's about creating depth of field and dimension with the use of vertical elements. Wall systems are used to build and frame raised patios and stairways, construct stately pillars, support garden beds and act as a retention system against land erosion.

Techo-Bloc's wall system colours have been coordinated to match our collection of slabs and paving stones; ensuring your outdoor design is well balanced and aesthetically pleasing.

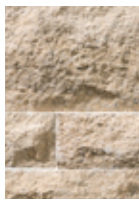


# BALTIMORE

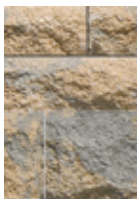
WALL COLLECTION DOUBLE-SIDED



SHALE GREY - FURNITURE : AGENCY.CA



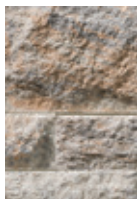
BRAZILIAN SAND



SANDEWOOD  
NEW COLOUR



CHESTNUT  
BROWN

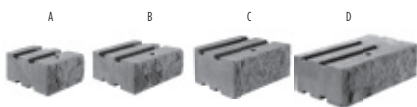


CHAMPLAIN  
GREY



SHALE GREY  
NEW COLOUR  
FORMERLY  
BRUSHED PEWTER

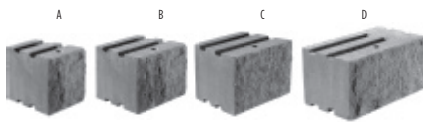
## BALTIMORE 90 MM



(H × D × L1 × L2)

A	90 × 270 × 230 × 190 mm	3 9/16 × 10 5/8 × 9 1/16 × 7 1/2 in
B	90 × 270 × 310 × 270 mm	3 9/16 × 10 5/8 × 12 3/16 × 10 5/8 in
C	90 × 270 × 270 × 270 mm	3 9/16 × 10 5/8 × 10 5/8 × 10 5/8 in
D	90 × 270 × 375 × 355 mm	3 9/16 × 10 5/8 × 14 3/4 × 14 in
	1.95 m <sup>2</sup> /pal	21.04 ft <sup>2</sup> /pal

## BALTIMORE 180 MM



(H × D × L1 × L2)

A	180 × 270 × 230 × 190 mm	7 1/16 × 10 5/8 × 9 1/16 × 7 1/2 in
B	180 × 270 × 310 × 270 mm	7 1/16 × 10 5/8 × 12 3/16 × 10 5/8 in
C	180 × 270 × 270 × 270 mm	7 1/16 × 10 5/8 × 10 5/8 × 10 5/8 in
D	180 × 270 × 375 × 355 mm	7 1/16 × 10 5/8 × 14 3/4 × 14 in
	1.95 m <sup>2</sup> /pal	21.04 ft <sup>2</sup> /pal





# BOREALIS

WALL & EDGE DOUBLE-SIDED



HAZELNUT BRANDY

TONE  
 DISTRIBUTION  
**HIGH**



SMOKED PINE



HAZELNUT  
BRANDY



SAUVIGNON OAK

## BOREALIS WALL & EDGE



(H × D × L)  
 152 × 203 × 1 219 mm    6 × 8 × 48 in  
 2.97 m<sup>2</sup>/pal    32 ft<sup>2</sup>/pal  
 16 units/pal

**Stonedge**  
 ■ ■ ■ COLLECTION



For an authentic look, each colour option is composed of a variety of darker & lighter tones. Natural ingredients such as granite are present within the recipe to allow for a range in tones, veining and textures from one stone to another.  
 Colour samples for reference only. Actual product colours may vary.





CHAMPLAIN GREY

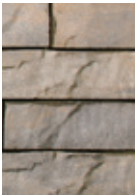


# NEW BRANDON

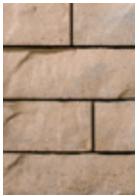
WALL COLLECTION DOUBLE-SIDED



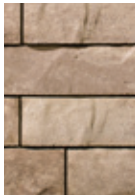
SHALE GREY



CHAMPLAIN GREY



SANDLEWOOD

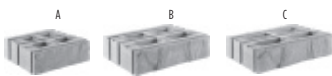


CHESTNUT BROWN



ONYX BLACK

## BRANDON 90 MM



(H × D × L1 × L2)

A	90 × 250 × 285 × 245 mm	3 9/16 × 9 13/16 × 11 1/4 × 9 5/8 in
B	90 × 250 × 365 × 325 mm	3 9/16 × 9 13/16 × 14 3/8 × 12 13/16 in
C	90 × 250 × 405 × 365 mm	3 9/16 × 9 13/16 × 15 5/16 × 14 3/8 in
	1.90 m <sup>2</sup> /pal	20.44 ft <sup>2</sup> /pal

## BRANDON 90 MM CORNER & Pillars

Pillar height 900 mm/35 7/16 in



(H × D × L)

90 × 250 × 360 mm	3 9/16 × 9 13/16 × 14 3/8 in
40 units/pal	

## BRANDON 180 MM



(H × D × L1 × L2)

A	180 × 250 × 285 × 245 mm	7 1/16 × 9 13/16 × 11 1/4 × 9 5/8 in
B	180 × 250 × 365 × 325 mm	7 1/16 × 9 13/16 × 14 3/8 × 12 13/16 in
C	180 × 250 × 405 × 365 mm	7 1/16 × 9 13/16 × 15 5/16 × 14 3/8 in
	1.90 m <sup>2</sup> /pal	20.44 ft <sup>2</sup> /pal

## BRANDON 180 MM CORNER & Pillars

Pillar height 900 mm/35 7/16 in



(H × D × L)

180 × 250 × 360 mm	7 1/16 × 9 13/16 × 14 3/8 in
20 units/pal	



For an authentic look, each colour option is composed of a variety of darker & lighter tones. Natural ingredients such as granite are present within the recipe to allow for a range in tones, veining and textures from one stone to another. Colour samples for reference only. Actual product colours may vary.






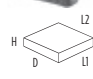


# ESCALA

WALL DOUBLE-SIDED



## ESCALA 3.5" DOUBLE-SIDED WALL

	A	B	B*	C	D
					
					
	(H × D × L1 × L2)				
A	90 × 250 × 270 × 220 (mm) 3 9/16 × 9 13/16 × 10 5/8 × 8 11/16 (in)				
B	90 × 250 × 360 × 310 (mm) 3 9/16 × 9 13/16 × 14 3/16 × 12 3/16 (in)				
B*	90 × 250 × 360 × 360 (mm) 3 9/16 × 9 13/16 × 14 3/16 × 14 3/16 (in)				
C	90 × 250 × 400 × 350 (mm) 3 9/16 × 9 13/16 × 15 3/4 × 13 3/4 (in)				
D	90 × 250 × 400 × 375 (mm) 3 9/16 × 9 13/16 × 15 3/4 × 14 3/4 (in)				
	2,57 m <sup>2</sup> / pal.		27.65 pi <sup>2</sup> / pal.		





# GRAPHIX

WALL DOUBLE-SIDED



GREYED NICKEL - FURNITURE: ROCHE-BOBOIS.COM



GRAPHIX			
1	2	3	4
	(H x D x L)		
1	75 x 230 x 508 mm	2 <sup>5</sup> / <sub>16</sub> x 9 <sup>1</sup> / <sub>16</sub> x 20 in	
2	75 x 255 x 508 mm	2 <sup>5</sup> / <sub>16</sub> x 10 <sup>1</sup> / <sub>16</sub> x 20 in	
3	75 x 280 x 508 mm	2 <sup>5</sup> / <sub>16</sub> x 11 x 20 in	
4	75 x 205 x 508 mm	2 <sup>5</sup> / <sub>16</sub> x 8 <sup>1</sup> / <sub>16</sub> x 20 in	
1A	75 x 230 x 508 mm	2 <sup>5</sup> / <sub>16</sub> x 9 <sup>1</sup> / <sub>16</sub> x 20 in	
2A	75 x 255 x 508 mm	2 <sup>5</sup> / <sub>16</sub> x 10 <sup>1</sup> / <sub>16</sub> x 20 in	
3A	75 x 280 x 508 mm	2 <sup>5</sup> / <sub>16</sub> x 11 x 20 in	
4A	75 x 205 x 508 mm	2 <sup>5</sup> / <sub>16</sub> x 8 <sup>1</sup> / <sub>16</sub> x 20 in	
	2.44 m <sup>2</sup> /pal	26.25 ft <sup>2</sup> /pal	





# MANCHESTER

WALL DOUBLE-SIDED



CHESTNUT BROWN



SHALE GREY



CHAMPLAIN  
GREY



ONYX BLACK\*



CHOCOLATE  
BROWN\*



HARVEST GOLD



CHESTNUT  
BROWN



SANDLEWOOD

## MANCHESTER



(H × D × L)	
100 × 200 × 300 mm	3 5/16 × 7 7/8 × 11 5/16 in
2.70 m <sup>2</sup> /pal	29.10 ft <sup>2</sup> /pal
*1.35 m <sup>2</sup> /half pal	*14.53 ft <sup>2</sup> /half pal

\*Onyx black and chocolate brown are only available in half-pallets.





# PRESCOTT

WALL COLLECTION DOUBLE-SIDED



ROCK GARDEN BROWN

TONE  
DISTRIBUTION  
HIGH



ROCK GARDEN  
BROWN



CORAL SANDS

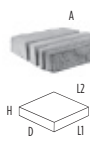




VICTORIA




RIVIERA

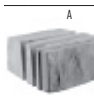


## PRESCOTT 2.25"

	A	B	C
			
	(H × D × L1 × L2)		
A	57 × 250 × 229 × 189 mm	2 1/4 × 9 13/16 × 9 × 7 7/16 in	
B	57 × 250 × 305 × 265 mm	2 1/4 × 9 13/16 × 12 × 10 7/16 in	
C	57 × 250 × 381 × 341 mm	2 1/4 × 9 13/16 × 15 × 13 7/16 in	
	2.51 m <sup>2</sup> /pal	27 ft <sup>2</sup> /pal	


## CORNER 2.25" Pillar height 1 029 mm/40 1/2 in

	
(H × D × L)	
57 × 250 × 360 mm	2 1/4 × 9 13/16 × 14 3/16 in
72 units/pal	

## PRESCOTT 4.5"

	A	B	C
			
	(H × D × L1 × L2)		
A	114 × 250 × 229 × 189 mm	4 1/2 × 9 13/16 × 9 × 7 7/16 in	
B	114 × 250 × 305 × 265 mm	4 1/2 × 9 13/16 × 12 × 10 7/16 in	
C	114 × 250 × 381 × 341 mm	4 1/2 × 9 13/16 × 15 × 13 7/16 in	
	2.51 m <sup>2</sup> /pal	27 ft <sup>2</sup> /pal	

## CORNER 4.5" Pillar height 1 029 mm/40 1/2 in

	
(H × D × L)	
114 × 250 × 360 mm	4 1/2 × 9 13/16 × 14 3/16 in
36 units/pal	

Stonedge  
COLLECTION



For an authentic look, each colour option is composed of a variety of darker & lighter tones. Natural ingredients such as granite are present within the recipe to allow for a range in tones, veining and textures from one stone to another. Colour samples for reference only. Actual product colours may vary.



# MINI-CRETA ARCHITECTURAL

WALL COLLECTION DOUBLE-SIDED



CHESTNUT BROWN



SHALE GREY



CHAMPLAIN  
GREY



SANDLEWOOD



CHESTNUT  
BROWN

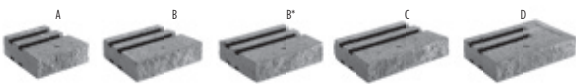


CHOCOLATE  
BROWN\*



ONYX BLACK\*

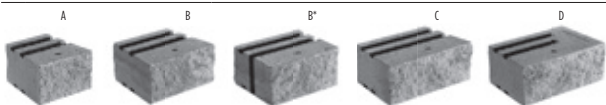
## MINI-CRETA 3" ARCHITECTURAL



(H × D × L1 × L2)

A	75 × 250 × 230 × 180 mm	2 9/16 × 9 13/16 × 9 1/16 × 7 1/16 in
B	75 × 250 × 300 × 250 mm	2 9/16 × 9 13/16 × 11 13/16 × 9 13/16 in
B*	75 × 250 × 300 × 300 mm	2 9/16 × 9 13/16 × 11 13/16 × 11 13/16 in
C	75 × 250 × 375 × 325 mm	2 9/16 × 9 13/16 × 14 3/4 × 12 13/16 in
D	75 × 250 × 375 × 350 mm	2 9/16 × 9 13/16 × 14 3/4 × 13 3/4 in
	2.23 m <sup>2</sup> /pal	24 ft <sup>2</sup> /pal
	*1.11 m <sup>2</sup> /half pal	*12 ft <sup>2</sup> /half pal

## MINI-CRETA 6" ARCHITECTURAL



(H × D × L1 × L2)

A	150 × 250 × 230 × 180 mm	5 7/8 × 9 13/16 × 9 1/16 × 7 1/16 in
B	150 × 250 × 300 × 250 mm	5 7/8 × 9 13/16 × 11 13/16 × 9 13/16 in
B*	150 × 250 × 300 × 300 mm	5 7/8 × 9 13/16 × 11 13/16 × 11 13/16 in
C	150 × 250 × 375 × 325 mm	5 7/8 × 9 13/16 × 14 3/4 × 12 13/16 in
D	150 × 250 × 375 × 350 mm	5 7/8 × 9 13/16 × 14 3/4 × 13 3/4 in
	2.79 m <sup>2</sup> /pal	30 ft <sup>2</sup> /pal

## PILLAR 24" MINI-CRETA 6" ARCHITECTURAL

Pillar height 900 mm/35 7/16 in



(H × D × L)

150 × 203 × 406 mm	5 7/8 × 8 × 16 in
24 units/pal	

\* Onyx black and chocolate brown are only available in half-pallets for Mini-Creta 3" Architectural.





# MINI-CRETA

## WALL COLLECTION DOUBLE-SIDED



SANDLEWOOD



ONYX BLACK\*



CHOCOLATE BROWN\*



AUTUMN RED



HARVEST GOLD



CHESTNUT BROWN



MOJAVE BEIGE



SANDLEWOOD

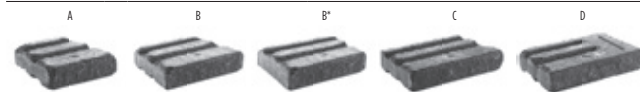


CHAMPLAIN GREY



SHALE GREY

### MINI-CRETA 3"



(H × D × L1 × L2)

A	75 × 250 × 230 × 180 mm	2 15/16 × 9 13/16 × 9 1/16 × 7 1/16 in
B	75 × 250 × 300 × 250 mm	2 15/16 × 9 13/16 × 11 13/16 × 9 13/16 in
B*	75 × 250 × 300 × 300 mm	2 15/16 × 9 13/16 × 11 13/16 × 11 13/16 in
C	75 × 250 × 375 × 325 mm	2 15/16 × 9 13/16 × 14 3/4 × 12 13/16 in
D	75 × 250 × 375 × 350 mm	2 15/16 × 9 13/16 × 14 3/4 × 13 3/4 in
	2.23 m <sup>2</sup> /pal	24 ft <sup>2</sup> /pal
	*1.11 m <sup>2</sup> /half pal	*12 ft <sup>2</sup> /half pal

### PILLAR 24" MINI-CRETA 3" Pillar height 900 mm/35 7/16 in

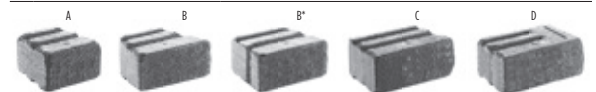


(H × D × L)

75 × 203 × 406 mm	2 7/8 × 8 × 16 in
48 units/pal	

\* Onyx black and chocolate brown are only available in half-pallets for Mini-Creta 3".

### MINI-CRETA 6"



(H × D × L1 × L2)

A	150 × 250 × 230 × 180 mm	5 7/8 × 9 13/16 × 9 1/16 × 7 1/16 in
B	150 × 250 × 300 × 250 mm	5 7/8 × 9 13/16 × 11 13/16 × 9 13/16 in
B*	150 × 250 × 300 × 300 mm	5 7/8 × 9 13/16 × 11 13/16 × 11 13/16 in
C	150 × 250 × 375 × 325 mm	5 7/8 × 9 13/16 × 14 3/4 × 12 13/16 in
D	150 × 250 × 375 × 350 mm	5 7/8 × 9 13/16 × 14 3/4 × 13 3/4 in
	2.79 m <sup>2</sup> /pal	30 ft <sup>2</sup> /pal

### PILLAR 24" MINI-CRETA 6" Pillar height 900 mm/35 7/16 in



(H × D × L)

150 × 203 × 406 mm	5 7/8 × 8 × 16 in
24 units/pal	









# RAFFINATO

WALL COLLECTION DOUBLE-SIDED



RAFFINATO POLISHED BEIGE CREAM



## RAFFINATO 90 MM SMOOTH



(H × D × L1 × L2)  
90 × 249 × 397 × 362 mm  
3 9/16 × 9 13/16 × 15 5/8 × 14 1/4 in  
2.29 m²/pal - 24.61 ft²/pal  
64 units/pal

## RAFFINATO 180 MM SMOOTH



(H × D × L1 × L2)  
180 × 249 × 397 × 362 mm  
7 1/16 × 9 13/16 × 15 5/8 × 14 1/4 in  
2.29 m²/pal - 24.61 ft²/pal  
32 units/pal

## RAFFINATO 90 MM POLISHED



(H × D × L1 × L2)  
90 × 248 × 397 × 362 mm  
3 9/16 × 9 3/4 × 15 5/8 × 14 1/4 in  
2.14 m²/pal - 23.08 ft²/pal  
60 units/pal

## RAFFINATO 180 MM POLISHED



(H × D × L1 × L2)  
180 × 248 × 397 × 362 mm  
7 1/16 × 9 3/4 × 15 5/8 × 14 1/4 in  
2.14 m²/pal - 23.08 ft²/pal  
30 units/pal

## 90 MM PILLARS & CORNERS SMOOTH

Pillar height 1 080 mm/42 1/2 in



(H × D × L)  
90 × 249 × 359 mm  
3 9/16 × 9 13/16 × 14 1/8 in  
48 units/pal

## 180 MM PILLARS & CORNERS SMOOTH

Pillar height 1 080 mm/42 1/2 in



(H × D × L)  
180 × 249 × 359 mm  
7 1/16 × 9 13/16 × 14 1/8 in  
24 units/pal

## 90 MM PILLARS & CORNERS POLISHED

Pillar height 900 mm/35 7/16 in



(H × D × L)  
90 × 248 × 357 mm  
3 9/16 × 9 3/4 × 14 1/16 in  
40 units/pal

## 180 MM PILLARS & CORNERS POLISHED

Pillar height 900 mm/35 7/16 in



(H × D × L)  
180 × 248 × 357 mm  
7 1/16 × 9 3/4 × 14 1/16 in  
20 units/pal



For an authentic look, each colour option is composed of a variety of darker & lighter tones. Natural ingredients such as granite are present within the recipe to allow for a range in tones, veining and textures from one stone to another. Colour samples for reference only. Actual product colours may vary.



# RÖCKA

WALL & EDGE DOUBLE-SIDED



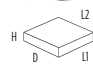



ROCK GARDEN BROWN- FURNITURE : GARDENCOTTAGE.COM



TONE  
DISTRIBUTION  
MEDIUM

BAJA BEIGE      ROCK GARDEN BROWN      CHOCOLATE BROWN      RIVIERA

## RÖCKA WALL & EDGE DOUBLE-SIDED

	A	B	C
			
	(H × D × L1 × L2)		
A	152 × 197 × 203 × 337 mm	6 × 7 3/4 × 8 × 13 1/4 in	
B	152 × 197 × 203 × 673 mm	6 × 7 3/4 × 8 × 26 1/2 in	
C	152 × 197 × 203 × 1 010 mm	6 × 7 3/4 × 8 × 39 3/4 in	
	1.85 m <sup>2</sup> /pal	19.88 ft <sup>2</sup> /pal	



# SUPREMA

SPLIT FACE WALL



SHALE GREY



### SUPREMA SPLIT FACE

	(H × D × L)	
	A	203 × 305 × 457 mm
	B	203 × 305 × 457 mm
		2.23 m <sup>2</sup> /pal
		24 units/pal (21 units of A, 3 units of B)
		8 × 12 × 18 in
		8 × 12 × 18 in
		24 ft <sup>2</sup> /pal







MOJAVE BEIGE



# SEMMA

WALL COLLECTION



MOJAVE BEIGE

									polished
MOJAVE BEIGE					CHAMPLAIN GREY	SANDLEWOOD	CHESTNUT BROWN	SHALE GREY	split-face

SEMMA SPLIT-FACE DOUBLE-SIDED - REGULAR & CORNER

(H × D × L1 × L2)

A 150 × 279 × 406 × 267 mm 5 7/8 × 11 × 16 × 10 1/2 in

B 150 × 279 × 406 × 267 mm 5 7/8 × 11 × 16 × 10 1/2 in

2.44m²/pal 26.25 ft²/pal

40 units (30 units of A regular, 10 units of B corner)

SEMMA PILLAR SPLIT-FACE

Pillar height 900 mm/35 7/16 in

(H × D × L)

150 × 266 × 406 mm 5 7/8 × 10 1/2 × 16 in

24 units/ pal

SEMMA POLISHED DOUBLE-SIDED - REGULAR & CORNER

(H × D × L1 × L2)

A 150 × 274 × 406 × 267 mm 5 7/8 × 10 15/16 × 16 × 10 1/2 in

B 150 × 274 × 406 × 267 mm 5 7/8 × 10 15/16 × 16 × 10 1/2 in

2.44m²/pal 26.25 ft²/pal

40 units (30 units of A regular, 10 units of B corner)

SEMMA PILLAR POLISHED

Pillar height 900 mm/35 7/16 in

(H × D × L)

150 × 264 × 405 mm 5 7/8 × 10 7/16 × 15 15/16 in

24 units/ pal







BALI TRAVERTINA CAP & TRAVERTINA SLAB RIVIERA





# CAPS

## **CAP IT OFF.**

They say good design is found at the core, but great design is in the details. Techo-Bloc caps are the finishing touch to any landscape project. Offered in a large array of colours, finishes and shapes, each cap serves many purposes. See the Cap Selection Guide to see which caps fit your application.





BALTIMORE WALL SHALE GREY



# COMPATIBILITY CHART

WALLS & Pillars	CAPS														
	Aged	Architectural cap	Brandon cap	Bullnose	Bullnose Grande	Graphix cap	Piedimonte	Piedimonte 28"×28"	Portofino	Prima 14"	Raffinato	Stonedge 28"×28"	York	York 28"×28"	York 32"×32"
Baltimore 90 & 180 mm	●	●	●		●		●		●	●	●		●		
<b>Borealis</b> does not require a cap															
Brandon 90 & 180 mm			●	●	●		●		●				●		
Brandon 90 & 180 mm pillar								●				●		●	
Graphix						●	●				●				
Manchester	●	●					●		●	●	●		●		
Mini-Creta Collection	●	●	●	●	●		●		●	●	●		●		
Mini-Creta Pillar 24" Collection								●				●		●	
Prescott Collection							●		●		●		●		
Prescott Pillar Collection								●				●		●	
Raffinato Collection					●	●	●				●				
Raffinato Pillar Collection								●			●				
Semma	●	●	●	●		●	●		●	●	●		●		
Semma Pillar															●
Suprema						●	●		●	●	●		●		

NOTE: The combinations shown in this chart are not complete. Other possible combinations exist.

APPLICATIONS	CAPS																					
	Aged	Architectural cap	Bali Travertina	Brandon cap	Bullnose	Bullnose Grande	Graphix cap	Piedimonte 12" × 30"	Piedimonte 14" × 30"	Piedimonte 28" × 28"	Portofino	Prima 14"	Raffinato	Stonedge 28" × 28"	York wall caps 16", 32", 48"	York 14" × 48"	York 24" × 36"	York 28" × 28"	York 32" × 32"	Blu 45 mm	Venetian	
Step	●	●		●	●	●	●	●	●		●	●	●		●	●						
Concrete & step overlay system																				●	●	
Pool coping			●		●	●		●	●		●		●		●							
Wall single-sided	●	●		●	●	●	●	●	●		●	●	●		●	●						
Wall double-sided	●	●					●	●	●		●	●	●		●	●						
Counter top									●	●					●		●	●	●			
Pillar										●				●				●	●			
LEGEND: ● NEW PRODUCT																						



# AGED

CAP DOUBLE-SIDED



HARVEST GOLD



SANDLEWOOD



CHESTNUT  
BROWN



MOJAVE BEIGE



AUTUMN RED



HARVEST GOLD



CHOCOLATE  
BROWN\*



ONYX BLACK\*

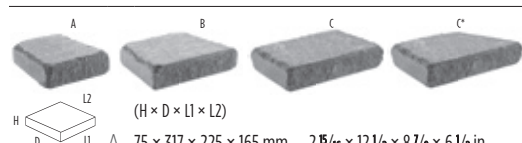


CHAMPLAIN  
GREY



SHALE GREY

## AGED



(H × D × L1 × L2)

A	75 × 317 × 225 × 165 mm	2 <sup>5</sup> / <sub>16</sub> × 12 <sup>1</sup> / <sub>2</sub> × 8 <sup>7</sup> / <sub>8</sub> × 6 <sup>1</sup> / <sub>2</sub> in
B	75 × 317 × 300 × 240 mm	2 <sup>5</sup> / <sub>16</sub> × 12 <sup>1</sup> / <sub>2</sub> × 11 <sup>5</sup> / <sub>16</sub> × 9 <sup>7</sup> / <sub>16</sub> in
C	75 × 317 × 375 × 315 mm	2 <sup>5</sup> / <sub>16</sub> × 12 <sup>1</sup> / <sub>2</sub> × 14 <sup>3</sup> / <sub>4</sub> × 12 <sup>3</sup> / <sub>8</sub> in
C*	75 × 317 × 375 × 345 mm	2 <sup>5</sup> / <sub>16</sub> × 12 <sup>1</sup> / <sub>2</sub> × 14 <sup>3</sup> / <sub>4</sub> × 13 <sup>9</sup> / <sub>16</sub> in
	20.12 lin. m /pal	66 lin. ft./pal
	*10.06 lin. m /half pal	*33 lin. ft./half pal

\* Onyx black and chocolate brown are only available in half-pallets.



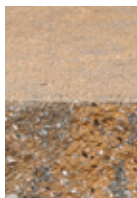


# NEW ARCHITECTURAL

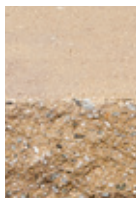
DOUBLE-SIDED CAP



CHESTNUT BROWN



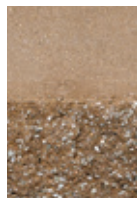
SANDLEWOOD



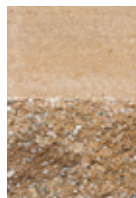
MOJAVE BEIGE



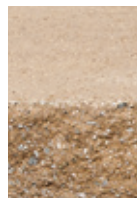
AUTUMN RED



CHOCOLATE BROWN



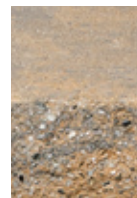
HARVEST GOLD



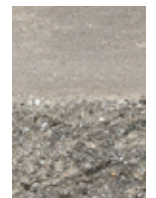
CHESTNUT BROWN



ONYX BLACK

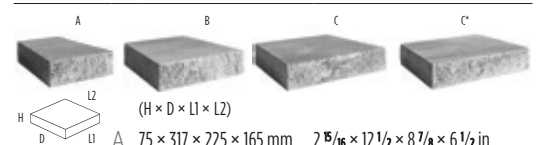


CHAMPLAIN GREY



SHALE GREY

## ARCHITECTURAL



(H × D × L1 × L2)

A	75 × 317 × 225 × 165 mm	2 5/16 × 12 1/2 × 8 7/8 × 6 1/2 in
B	75 × 317 × 300 × 240 mm	2 5/16 × 12 1/2 × 11 5/16 × 9 7/16 in
C	75 × 317 × 375 × 315 mm	2 5/16 × 12 1/2 × 14 3/4 × 12 3/8 in
C*	75 × 317 × 375 × 345 mm	2 5/16 × 12 1/2 × 14 3/4 × 13 9/16 in
	20.12 lin. m / pal	66 lin. ft. / pal



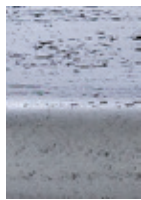


# BALI TRAVERTINA

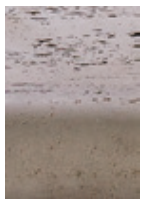
POOL COPING



IVORY



RIVIERA



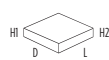
ROCK GARDEN  
BROWN



IVORY

■ ■ ■ TONE  
■ ■ ■ DISTRIBUTION  
■ ■ ■ HIGH

## BALI TRAVERTINA



(H1 × H2 × D × L)  
57 × 70 × 305 × 406 mm    2 1/4 × 2 3/4 × 12 × 16 in  
11.38 lin. m/pal    37.34 lin. ft./pal  
28 units/pal

Stonedge  
COLLECTION





# NEW BRANDON

CAP



CHAMPLAIN GREY



SHALE GREY



CHAMPLAIN GREY



SANDLEWOOD



CHESTNUT BROWN



ONYX BLACK

## BRANDON CAP



(H × D × L)  
90 × 356 × 406 mm  
7.32 lin. m/pal  
18 units

3 9/16 × 14 × 16 in  
24 lin. ft./pal



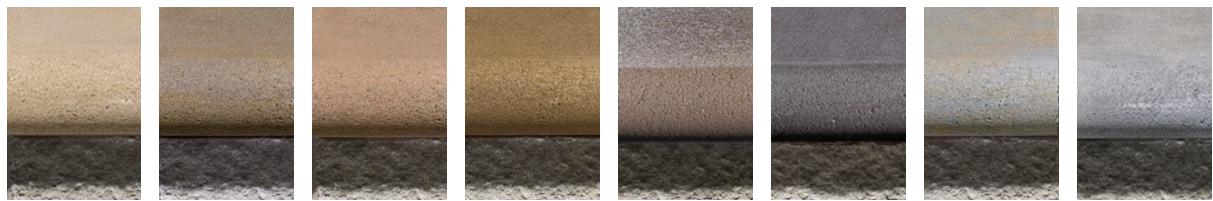


# BULLNOSE

CAP & POOL COPING



ONYX BLACK



SANDLEWOOD    CHESTNUT BROWN    MOJAVE BEIGE    HARVEST GOLD    CHOCOLATE BROWN\*    ONYX BLACK\*    CHAMPLAIN GREY    SHALE GREY

## BULLNOSE



(H × D × L)  
60 × 305 × 150 mm    2 3/8 × 12 × 5 7/8 in  
27 lin. m/pal    88.60 lin. ft./pal  
180 units/pal  
\* 13.50 lin. m/pal    \* 43.60 lin. ft./pal  
\* 90 units/pal

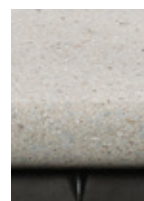
\* Onyx black and chocolate brown are only available in half-pallets.





# NEW BULLNOSE GRANDE

CAP & POOL COPING



GREYED NICKEL



BEIGE CREAM

## BULLNOSE GRANDE



(H × D × L)

60 × 353 × 750 mm

9 lin. m/pal

12 units

2<sup>3</sup>/<sub>8</sub> × 13<sup>7</sup>/<sub>8</sub> × 29<sup>1</sup>/<sub>2</sub> in

29.53 lin. ft./pal





# ESCALA 3.5"

CAP



MOJAVE BEIGE



## ESCALA 3.5" CAP



(H x D x L)

A	90 x 380 x 225 x 165 mm	3 9/16 x 14 5/16 x 8 7/8 x 6 1/2 in
B	90 x 380 x 300 x 240 mm	3 9/16 x 14 5/16 x 11 5/16 x 9 7/16 in
C	90 x 380 x 375 x 315 mm	3 9/16 x 14 5/16 x 14 3/4 x 12 3/8 in
	17.28 lin. m/pal.	56.70 lin. ft/pal.





# NEW GRAPHIX

REVERSIBLE CAP



SMOOTH SIDE ONYX BLACK

smooth side

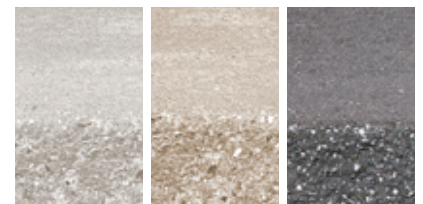


GREYED NICKEL

BEIGE CREAM

ONYX BLACK

split side



GREYED NICKEL

BEIGE CREAM

ONYX BLACK

## GRAPHIX CAP 14"×20"



SMOOTH SIDE



SPLIT FACE SIDE



(H × D × L)

75 × 355 × 508 mm

14.22 lin. m/pal

28 units

2 5/16 × 14 × 20 in

46.67 lin. ft./pal





# PIEDIMONTE

CAP COLLECTION DOUBLE-SIDED



RIVIERA



RIVIERA



ONYX BLACK



ROCK GARDEN  
BROWN

■ ■ ■ TONE  
■ ■ ■ DISTRIBUTION  
■ ■ ■ HIGH

## PIEDIMONTE 12"×30" WALL CAP



(H × D × L)  
57 × 298 × 762 mm    2 1/4 × 11 3/4 × 30 in  
24.39 lin. m/pal    80 lin. ft./pal  
32 units

## PIEDIMONTE 14"×30" WALL & STEP CAP



(H × D × L)  
57 × 356 × 762 mm    2 1/4 × 14 × 30 in  
18.29 lin. m/pal    60 lin. ft./pal  
24 units

## PIEDIMONTE 28"×28" PILLAR CAP



(H × D × L)  
73 × 711 × 711 mm    2 7/8 × 28 × 28 in  
6 units

Stonedge  
■■■ COLLECTION





# PORTOFINO

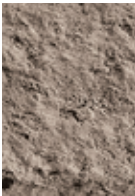
CAP DOUBLE-SIDED



TONE  
 DISTRIBUTION  
 MEDIUM



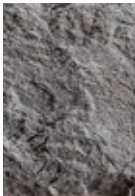
BAJA BEIGE



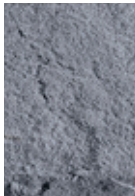
ROCK GARDEN  
BROWN



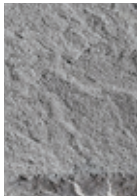
CHOCOLATE  
BROWN



ONYX BLACK



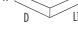

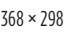

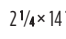
AZZURRO



RIVIERA



## PORTOFINO

	A	B	C	D
				
	(H × D × L1 × L2)			
A	57 × 368 × 298 × 238 mm	2 1/4 × 14 1/2 × 11 3/4 × 9 3/8 in		
B	57 × 368 × 403 × 349 mm	2 1/4 × 14 1/2 × 15 7/8 × 13 3/4 in		
C	57 × 368 × 478 × 419 mm	2 1/4 × 14 1/2 × 18 15/16 × 16 1/2 in		
D	57 × 368 × 483 × 483 mm	2 1/4 × 14 1/2 × 19 × 19 in		
	15.30 lin. m/pal	50.22 lin. ft./pal		



# PRIMA 14"

SPLIT FACE & POLISHED CAP



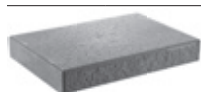
SPLIT FACE SHALE GREY



POLISHED SHALE GREY

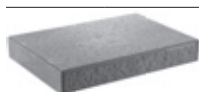


## PRIMA 14" SPLIT FACE



(H × D × L)  
 75 × 356 × 406 mm    2 5/16 × 14 × 16 in  
 19.51 lin. m/pal    64 lin. ft./pal  
 48 units

## PRIMA 14" POLISHED



(H × D × L)  
 75 × 356 × 406 mm    2 5/16 × 13 3/4 × 16 in  
 19.51 lin. m/pal    64 lin. ft./pal  
 48 units





# RAFFINATO

CAP DOUBLE-SIDED



GREYED NICKEL

						
GREYED NICKEL	BEIGE CREAM	ONYX BLACK	CHAMPLAIN GREY	CHESTNUT BROWN	SANDLEWOOD	SHALE GREY

## RAFFINATO CAP 14"×28"



(H × D × L)	
90 × 356 × 711 mm	3 9/16 × 14 × 28 in
17.07 lin. m/pal	56 lin. ft./pal
24 units	





# STONEDGE

PILLAR CAP



CHOCOLATE BROWN



ONYX BLACK



CHOCOLATE BROWN



BAJA BEIGE

■ ■ ■ TONE  
■ ■ ■ DISTRIBUTION  
■ ■ ■ MEDIUM

## STONEDGE



(H × D × L)

57 × 711 × 711 mm

2 1/4 × 28 × 28 in

6 units

Stonedge  
■■■ COLLECTION





# YORK

CAP



COUNTER TOP 24" × 36" RIVIERA

TONE  
 DISTRIBUTION  
 HIGH



CHOCOLATE  
BROWN



IVORY



ONYX BLACK



ROCK GARDEN  
BROWN



RIVIERA

### YORK 28" PILLAR CAP



(H × D × L)  
 89 × 730 × 730 mm    3 1/2 × 28 3/4 × 28 3/4 in  
 6 units

### YORK 32" PILLAR CAP



(H × D × L)  
 89 × 813 × 813 mm    3 1/2 × 32 × 32 in  
 6 units

### YORK COUNTER TOP 24" × 36"



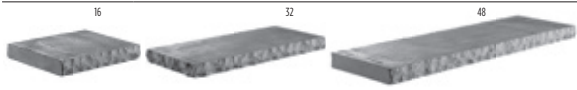
(H × D × L)  
 57 × 610 × 914 mm    2 1/4 × 24 × 36 in  
 16 units

### YORK WALL CAP 14" × 48"



(H × D × L)  
 57 × 356 × 1 219 mm    2 1/4 × 14 × 48 in  
 14.63 lin. m/pal    48 lin. ft./pal  
 12 units

### YORK WALL CAPS 16", 32" & 48"



(H × D × L)  
 57 × 356 × 406 mm    2 1/4 × 14 × 16 in  
 57 × 356 × 813 mm    2 1/4 × 14 × 32 in  
 57 × 356 × 1 219 mm    2 1/4 × 14 × 48 in  
 14.63 lin. m/pal    48 lin. ft./pal  
 6 units of each

Stonedge  
 ■ ■ ■ COLLECTION







BLU 80 POLISHED GREYED NICKEL - FURNITURE : ROCHE-BOBOIS.COM





# STEPS & OVERLAY SYSTEM

## STEP IT UP.

No matter the topography of your outdoor project, Techo-Bloc offers you a wide variety of products to build steps for all applications. Whether you dream of a delicate winding outdoor stairway, envision a bold and imposing staircase built of large rock face steps or simply need a few steps to connect the different level pavilions in your outdoor patio, Techo-Bloc has the answer.

We also offer overlay systems to restore old concrete steps, patios and balconies by concealing the staining, cracking and unkept appearance of poured concrete with a maintenance-free & salt-resistant ultra-thin paving stone solution.



# BOREALIS

STEP



HAZELNUT BRANDY



HAZELNUT BRANDY



SAUVIGNON OAK



HAZELNUT BRANDY



SMOKED PINE



## BOREALIS STEP



(H × D1 × D2 × L)  
152 × 400 × 406 × 1 219 mm    6 × 15 3/4 × 16 × 48 in  
9.76 lin. m/pal    32 lin. ft./pal  
8 units

Stonedge  
COLLECTION







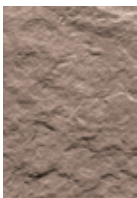


# MAYA

STEP



RIVIERA



CHOCOLATE  
BROWN



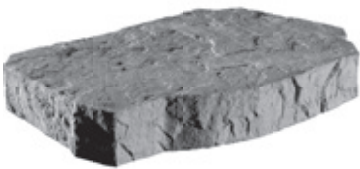
ROCK GARDEN  
BROWN



BAJA BEIGE

TONE  
DISTRIBUTION  
MEDIUM

## MAYA STEP



(H × D × L)  
152 × 813 × 1 219 mm  
6 × 32 × 48 in  
1.22 lin. m/pal  
4 lin. ft./pal  
1 unit

Stonedge  
COLLECTION





# RAFFINATO

STEP



## RAFFINATO STEP



(H × D × L)  
 180 × 368 × 1067 mm    7 1/16 × 14 1/2 × 42 in  
 9.6 lin. m/pal    31.5 lin. ft./pal  
 9 units



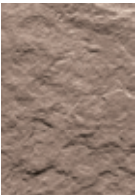


# RÖCKA

STEP COLLECTION



RIVIERA



CHOCOLATE  
BROWN



ROCK GARDEN  
BROWN



BAJA BEIGE



## RÖCKA STEP 48" DOUBLE-SIDED



(H × D1 × D2 × L)  
 152 × 378 × 359 × 1 219 mm  
 6 × 14 7/8 × 14 1/8 × 48 in  
 9.76 lin. m/pal  
 32 lin. ft./pal  
 8 units

## RÖCKA STEP 60"



(H × D1 × D2 × L)  
 152 × 387 × 371 × 1 524 mm  
 6 × 15 1/4 × 14 5/8 × 60 in  
 3.05 lin. m/pal  
 10 lin. ft./pal  
 2 units





# YORK

STEP

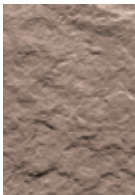


ROCK GARDEN BROWN

TONE  
DISTRIBUTION  
HIGH



RIVIERA



CHOCOLATE  
BROWN



ROCK GARDEN  
BROWN



BAJA BEIGE

## YORK STEP



(H × D × L)

152 × 381 × 1524 mm

3.05 lin. m/pal

2 units

6 × 15 × 60 in

10 lin. ft./pal

Stonedge

COLLECTION



For an authentic look, each colour option is composed of a variety of darker & lighter tones. Natural ingredients such as granite are present within the recipe to allow for a range in tones, veining and textures from one stone to another. Colour samples for reference only. Actual product colours may vary.



# BLU 45 MM

SLATE & SMOOTH OVERLAY SYSTEM







SLATE SANDLEWOOD



SMOOTH SHALE GREY

slate							
	SHALE GREY	CHAMPLAIN GREY	SANDLEWOOD	MOJAVE BEIGE	CHESTNUT BROWN	HARVEST GOLD	AUTUMN RED
smooth							
	GREYED NICKEL	CHAMPLAIN GREY	SHALE GREY	ONYX BLACK	CHESTNUT BROWN	BEIGE CREAM	

## BLU 45 MM - SLATE & SMOOTH

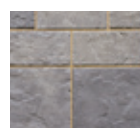
A	B	C
		
	(H x D x L)	
A	45 x 330 x 165 mm	1 3/4 x 13 x 6 1/2 in
B	45 x 330 x 330 mm	1 3/4 x 13 x 13 in
C	45 x 330 x 495 mm	1 3/4 x 13 x 19 1/2 in
	11.84 m <sup>2</sup> /pal	127.44 ft <sup>2</sup> /pal



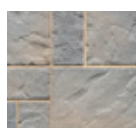


# VENETIAN

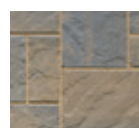
SLATE & SMOOTH OVERLAY SYSTEM



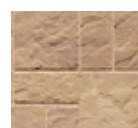
SHALE GREY



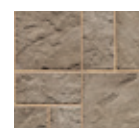
CHAMPLAIN  
GREY



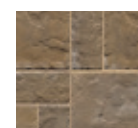
SANDLEWOOD



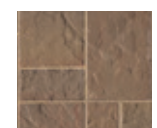
MOJAVE BEIGE



CHESTNUT  
BROWN



HARVEST GOLD

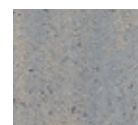


AUTUMN RED

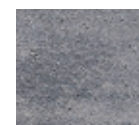
slate



GREYED NICKEL



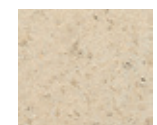
CHAMPLAIN  
GREY



SHALE GREY



CHESTNUT  
BROWN



BEIGE CREAM

smooth

## VENETIAN RISER - SLATE & SMOOTH



SLATE  
SMOOTH

(H × D × L)

45 × 178 × 406 mm 1 3/4 × 7 × 16 in

19.52 lin. m/pal 64 lin. ft./pal

48 units

45 × 178 × 397 mm 1 3/4 × 7 × 15 5/8 in

19.06 lin. m/pal 62.52 lin. ft./pal

48 units



(H × D × L)

45 × 356 × 406 mm 1 3/4 × 14 × 16 in

19.52 lin. m/pal 64 lin. ft./pal

48 units

45 × 356 × 397 mm 1 3/4 × 14 × 15 5/8 in

19.06 lin. m/pal 62.52 lin. ft./pal

48 units

## VENETIAN CAP - SLATE & SMOOTH



For an authentic look, each colour option is composed of a variety of darker & lighter tones. Natural ingredients such as granite are present within the recipe to allow for a range in tones, veining and textures from one stone to another. Colour samples for reference only. Actual product colours may vary.





HAZELNUT BRANDY





# EDGES

## **REDEFINE THE LIMITS.**

Add curb appeal to your driveway and reduce maintenance of your walkways and flowerbeds with edging stones. Edging keeps the mulch in and the grass out of flowerbeds. Our edging product line is offered in both traditional and modern styles. Choose from nature-inspired colours to fit your home for a traditional look, or add a more contemporary touch to your home's exterior by opting for sharper lines and contrasting colours.





# AVIGNON

## EDGE



SHALE GREY



CHAMPLAIN  
GREY



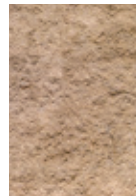
SANDLEWOOD



CHESTNUT  
BROWN



HARVEST GOLD



MOJAVE BEIGE

## AVIGNON



(H × D × L)

178 × 114 × 305 mm

27.44 lin. m/pal

90 units/pal

7 × 4 1/2 × 12 in

90 lin. ft./pal



# BOREALIS

## WALL & EDGE



SMOKED PINE



HAZELNUT  
BRANDY



SAUVIGNON OAK

## BOREALIS WALL & EDGE



(H × D1 × D2 × L)

152 × 197 × 203 × 1 219 mm

2.97 m²/pal

19.51 lin. m/pal

16 units/pal

6 × 7 3/4 × 8 × 48 in

32 ft²/pal

64 lin. ft./pal

Stonededge  
COLLECTION

TONE  
DISTRIBUTION  
HIGH







CHESTNUT BROWN

# BRANDON

EDGE



ONYX BLACK



CHOCOLATE BROWN\*



CHESTNUT BROWN



SANDLEWOOD



CHAMPLAIN GREY



SHALE GREY

## BRANDON EDGE

	A	B	C
	(H x D x L)		
A	180 x 100 x 225 mm	7 1/16 x 3 5/16 x 8 7/8 in	
B	180 x 100 x 325 mm	7 1/16 x 3 5/16 x 12 5/16 in	
C	180 x 100 x 425 mm	7 1/16 x 3 5/16 x 16 3/4 in	
	42.90 lin. m/pal	140.75 lin. ft. /pal	
	44 units of each		







# PIETRA

## EDGE



SHALE GREY



CHAMPLAIN GREY



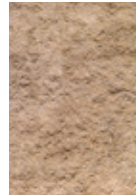
SANDEWOOD



CHESTNUT BROWN



HARVEST GOLD

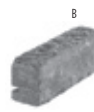


MOJAVE BEIGE

## PIETRA



A



B



C



(H × D × L)

A 114 × 80 × 225 mm

B 114 × 80 × 300 mm

C 114 × 80 × 375 mm

29.20 lin. m/pal

32 units of each

4 1/2 × 3 1/8 × 8 7/8 in

4 1/2 × 3 1/8 × 11 15/16 in

4 1/2 × 3 1/8 × 14 3/4 in

96 lin. ft./pal



# RAFFINATO

## PILLAR & EDGE



GREYED NICKEL



BEIGE CREAM

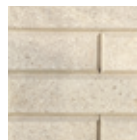


ONYX BLACK

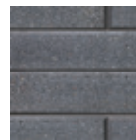
smooth



GREYED NICKEL



BEIGE CREAM



ONYX BLACK

polished

### RAFFINATO 90 MM SMOOTH



(H × D × L)

90 × 249 × 359 mm

3 9/16 × 9 13/16 × 14 1/8 in

48 units/pal

### RAFFINATO 90 MM POLISHED



(H × D × L)

90 × 248 × 357 mm

3 9/16 × 9 3/4 × 14 1/16 in

40 units/pal

### RAFFINATO 180 MM SMOOTH



(H × D × L)

180 × 249 × 359 mm

7 1/16 × 9 13/16 × 14 1/8 in

24 units/pal

### RAFFINATO 180 MM POLISHED



(H × D × L)

180 × 248 × 357 mm

7 1/16 × 9 3/4 × 14 1/16 in

20 units/pal





# RÖCKA

WALL & EDGE



RÖCKA WALL & EDGE DOUBLE-SIDED

	A	B	C
(H × D × L1 × L2)			
A	152 × 197 × 203 × 337 mm	6 × 7 <sup>3</sup> / <sub>4</sub> × 8 × 13 <sup>1</sup> / <sub>4</sub> in	
B	152 × 197 × 203 × 673 mm	6 × 7 <sup>3</sup> / <sub>4</sub> × 8 × 26 <sup>1</sup> / <sub>2</sub> in	
C	152 × 197 × 203 × 1 010 mm	6 × 7 <sup>3</sup> / <sub>4</sub> × 8 × 39 <sup>3</sup> / <sub>4</sub> in	
	12.12 lin.m/pal	39.75 lin.ft/pal	



# TUNDRA

EDGE



TUNDRA



(H1 × H2 × D1 × D2 × L)		
90 × 160 × 102 × 225 × 250 mm	3 <sup>9</sup> / <sub>16</sub> × 6 <sup>5</sup> / <sub>16</sub> × 4 × 8 <sup>7</sup> / <sub>8</sub> × 9 <sup>15</sup> / <sub>16</sub> in	
16 lin. m/pal	52.50 lin. ft./pal	
64 units/pal		







MANCHESTER FOYER HARVEST GOLD





# OUTDOOR FEATURES

## SPARK UP YOUR PATIO.

With more space than rooms have to offer, it seems as if the backyard is becoming the party room. Homeowners are looking for creative and functional ways to entertain their guests under the open sky. Fire Pits, Pizza Ovens and Fireplaces can be found in this section for all your outdoor entertaining needs.



# GRILL ISLAND



CHESTNUT BROWN



SHALE GREY



CHAMPLAIN  
GREY



SANDLEWOOD



MOJAVE BEIGE



CHESTNUT  
BROWN



HARVEST GOLD



AUTUMN RED



CHOCOLATE  
BROWN\*



ONYX BLACK\*

For technical information, a full list of products and installation details please refer to the Techo-Spec book. Appliances not included.  
\* Onyx black and chocolate brown are only available in half-pallets.





# MANCHESTER FOYER

FIRE PLACE



SHALE GREY



HARVEST GOLD



Pre-assembled (sold separately). The harvest gold and shale grey fireplace differ both in colour and slightly in design. The harvest gold uses York caps while the shale grey uses Bullnose caps. Please refer to the Techo-Spec book for details.

For an authentic look, each colour option is composed of a variety of darker & lighter tones. Natural ingredients such as granite are present within the recipe to allow for a range in tones, veining and textures from one stone to another. Colour samples for reference only. Actual product colours may vary.



# MANCHESTER ELITE

## PIZZA OVEN

Sold as a kit, 2 -piece modular system.



SHALE GREY



HARVEST GOLD      SHALE GREY



The chamber for the pizza oven can be purchased separately for custom pizza oven builds. Refer to Techo-Specs for product details.

MANCHESTER ELITE TOP SECTION	MANCHESTER ELITE BOTTOM SECTION
HEIGHT 1260 mm ■ 49 5/8 in	HEIGHT 1060 mm ■ 41 3/4 in
WIDTH 1251 mm ■ 49 1/4 in	WIDTH 1251 mm ■ 49 1/4 in
LENGTH 1248 mm ■ 49 1/8 in	LENGTH 1492 mm ■ 58 3/4 in

Comes with various pizza accessories. The Manchester Elite pizza oven kit includes colour accent pieces in each kit : the shale grey version includes onyx black accents; the harvest gold includes chocolate brown accents.



# MANCHESTER RUSTIC

## PIZZA OVEN

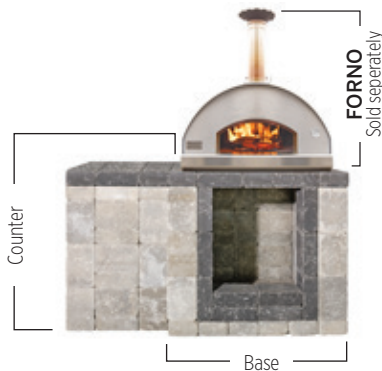
Modular system, Sold as a kit not pre-assembled



SHALE GREY



HARVEST GOLD      SHALE GREY



MANCHESTER RUSTIC BASE	MANCHESTER RUSTIC COUNTER
HEIGHT 1100 mm ■ 43 5/16 in	HEIGHT 1090 mm ■ 42 9/16 in
WIDTH 1100 mm ■ 43 5/16 in	WIDTH 940 mm ■ 37 in
LENGTH 1200 mm ■ 47 1/4 in	LENGTH 762 mm ■ 30 in

Base and counter kits are sold separately. Upon ordering, specify counter and/or base kits. The Manchester Rustic pizza oven kit includes colour accent pieces in each kit : the shale grey version includes onyx black accents; the harvest gold includes chocolate brown accents.





# RAFFINATO

## PIZZA OVEN



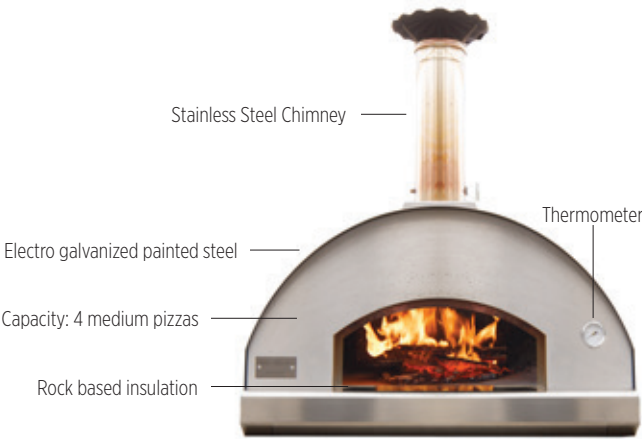
RAFFINATO PIZZA OVEN BASE		RAFFINATO PIZZA OVEN COUNTER	
HEIGHT	990 mm ■ 39 in	HEIGHT	990 mm ■ 39 in
WIDTH	1 077 mm ■ 42 3⁄8 in	WIDTH	940 mm ■ 37 in
LENGTH	1 216 mm ■ 47 7⁄8 in	LENGTH	762 mm ■ 30 in

Base and counter kits are sold separately. Upon ordering, specify counter and/or base kits. The Raffinato pizza oven kit includes colour accent pieces in each kit : the greyed nickel version includes onyx black accents; the beige cream includes greyed nickel accents.

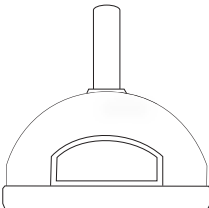


# FORNO

## OVEN



Comes with various pizza accessories:  
37" long wood pizza oven brush  
42" long wood pizza peel (spatula)



FORNO	
HEIGHT	1 160 mm ■ 45 11⁄16 in
WIDTH	855 mm ■ 33 11⁄16 in
LENGTH	980 mm ■ 38 9⁄16 in





Sold as a kit not pre-assembled



RIVIERA

ROCK GARDEN  
BROWN



Piedimonte caps included.  
Techo-Bloc is not responsible for  
any damages to the fire pit if it  
is not installed with a sleeve or  
accessory kit.

Technical drawing of a rectangular prism. The isometric view on the left shows dimensions: top edge 28 3/4" - 730 mm, front edge 26 3/4" - 679 mm, and right edge 17 3/4" - 445 mm. The orthographic view on the right shows a front view with dimensions: top edge 28 3/4" - 730 mm, left edge 0.105" - 2.7 mm, and bottom edge 26 3/4" - 679 mm.





# RAFFINATO

FIRE PIT  
Sold as a kit not pre-assembled



GREYED NICKEL



GREYED NICKEL



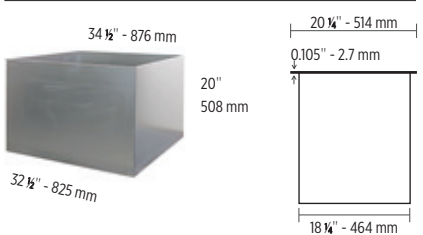
BEIGE CREAM

## RAFFINATO FIRE PIT

HEIGHT	540 mm ■ 21 1/4 in
WIDTH	1 054 mm ■ 41 1/2 in
LENGTH	1 419 mm ■ 55 7/8 in

12" x 24" caps included.  
Techo-Bloc is not responsible for any  
damages to the fire pit if it is not in-  
stalled with a sleeve or accessory kit.

## RAFFINATO INSERT









# VALENCIA

FIRE PIT



AUTUMN RED



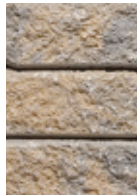
HARVEST GOLD



CHESTNUT BROWN



MOJAVE BEIGE



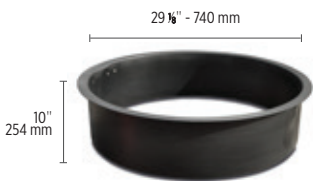
SANDLEWOOD



CHAMPLAIN GREY



SHALE GREY



Insert sold separately.

Techo-Bloc is not responsible for any damages to the fire pit if it is not installed with a sleeve or accessory kit.

## VALENCIA FIRE PIT



(H × D × L)		
<b>Height</b>	75 × 250 × 247 mm	2 9/16 × 9 11/16 × 9 3/4 in
<b>Exterior Diameter</b>	1.243 m (1 243 mm)	48 5/16 in (4' 1")
<b>Interior Diameter</b>	0.74 m (740 mm)	29 1/8 in (2' 5")
	80 units	

For an authentic look, each colour option is composed of a variety of darker & lighter tones. Natural ingredients such as granite are present within the recipe to allow for a range in tones, veining and textures from one stone to another. Colour samples for reference only. Actual product colours may vary.







NEW

BRANDON

FIRE PIT COLLECTION



BRANDON RECTANGLE FIRE PIT SHALE GREY



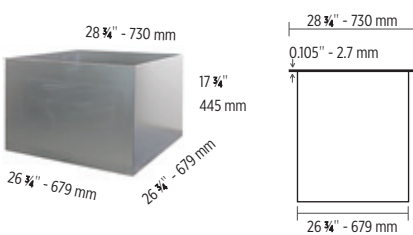
BRANDON SQUARE FIRE PIT SHALE GREY



BRANDON SQUARE FIRE PIT

Overall Height	507 mm	19 5⁄16 in
Overall Width	1 289 mm	50 3⁄4 in
Overall Length	1 359 mm	53 1⁄2 in
Cap units	6 units	
Brandon 90 mm	30 units of A	10 units of B
Brandon 90 mm corner	20 units	

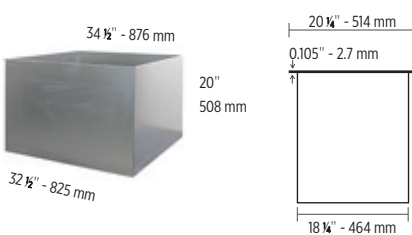
BRANDON SQUARE FIRE PIT INSERT



BRANDON RECTANGLE FIRE PIT

Overall Height	507 mm	19 5⁄16 in
Overall Width	1 130 mm	44 1⁄2 in
Overall Length	1 467 mm	57 3⁄4 in
Cap units	8 units	
Brandon 90 mm	10 units of B	20 units of C
Brandon 90 mm corner	20 units	

BRANDON RECTANGLE FIRE PIT INSERT



Techo-Bloc is not responsible for any damages to the fire pit if it is not installed with a sleeve or accessory kit.



# COLOUR COORDINATE

For an authentic look, each colour option is composed of a variety of darker & lighter tones.  
Natural ingredients such as granite are present within the recipe to allow for a range in tones, veining and textures from one stone to another.  
Final colour selection should be made with your contractor from product samples or at your local dealer from stocked product.

This colour chart serves as a guide for colour selection across product lines.

SLABS	sandlewood	grey	slate grey	charcoal	red & black	mojave beige	champain grey	victoria	riviera	onyx black	rock garden brown	harvest gold	chestnut brown	autumn red	chocolate brown	ivory	azzurro	baja beige	olive	brazilian sand	brushed pewter	coral sands	smoked pine	hazelnut brandy	sauvignon oak	greyed nickel	beige cream
Solar reflectance	0.21	0.30	0.24	n/a	n/a	0.26	0.23	0.36	0.20	n/a	0.21	0.18	0.23	0.15	n/a	0.46	0.15	0.38	0.17	n/a	n/a	0.40	0.12	0.23	0.50	0.32	0.30
Solar reflectance index (SRI)	23	34	26	n/a	n/a	29	25	40	19	n/a	20	18	25	14	n/a	53	12	42	15	n/a	n/a	45	9	23	38	35	32
Aberdeen											●						●	●	●								
Blu 60 mm - Slate	●		●			●	●					●	●	●													
Blu Grande - Slate	●		●			●	●					●	●	●													
Blu 60 mm (6" × 13") - Slate	●		●			●	●			●		●	●	●	●												
Blu 60 mm & Blu Grande Smooth			●				●			●			●	●	●											●	●
Blu 60 mm (6" × 13") - Smooth			●				●			●			●	●	●	●										●	●
Blu 60 mm & Grande - Polished			●							●			●	●												●	●
BLU 60 mm & GRANDE - GALAXY																										●	●
Borealis																							●	●	●		
Inca								●	●									●				●					
Industria - 600 series		●		●						●																●	●
Maya								●	●									●									
Monticello										●	●				●		●		●							●	●
Para										●																●	●
Travertina									●		●					●										●	●
Tux										●																●	●
PAVERS	sandlewood	grey	slate grey	charcoal	red & black	mojave beige	champain grey	victoria	riviera	onyx black	rock garden brown	harvest gold	chestnut brown	autumn red	chocolate brown	ivory	azzurro	baja beige	olive	brazilian sand	brushed pewter	coral sands	smoked pine	hazelnut brandy	sauvignon oak	greyed nickel	beige cream
Allegro	●		●			●	●					●	●	●													
Antika	●		●			●	●			●			●	●	●												
Blu 80 mm - Slate	●		●			●	●					●	●	●													
Blu 80 mm (6"×13") - Slate	●		●			●	●			●		●	●	●	●												
Blu 80 mm - Smooth			●				●			●			●													●	●
Blu 80 mm (6"×13") - Smooth			●				●			●			●		●											●	●
Blu 80mm Polished			●							●			●													●	●
BLU 80 mm GALAXY																										●	●
Eva	●		●			●	●					●	●														
Flagstone	●					●	●					●	●														
Hera - Rectangle										●					●												
Industria Collection		●		●						●																●	●
Linea	●		●				●			●			●		●												
Mista - Square & random Permeable	●		●			●	●					●	●	●													
Mista Grande			●				●			●		●	●		●												
Parisien - Square & Circle	●		●				●						●	●	●												
Parisien - Rectangle	●		●				●			●			●	●	●												
Pure	●		●				●						●														
San Marino	●		●				●			●			●		●												
Victorien 60 mm	●	●	●		●	●				●					●												
Victorien 60 mm Permeable			●							●			●														
Villagio	●		●			●	●			●		●	●		●												

● Pre-Order ● New ● Available ● Available 1/2 pallet



WALLS & Pillars	sandlewood	grey	shale grey	charcoal	red & black	mojave beige	champlain grey	victoria	riviera	onyx black	rock garden brown	harvest gold	chestnut brown	autumn red	chocolate brown	ivory	azzurro	baja beige	olive	coral sands	smoked pine	hazelnut brandy	saugignon oak	greyed nickel	beige cream	brazilian sand	
Baltimore 90 mm & 180 mm	●		●				●						●													●	
Borealis																					●	●	●				
Brandon	●		●				●			●			●														
Escala	●		●			●	●					●	●														
Graphix										●														●	●		
Manchester	●		●				●			●		●	●		●												
Mini-Creta 3"	●		●			●	●			●		●	●	●	●												
Mini-Creta 6" & Pillar collection	●		●			●	●					●	●	●	●												
Mini-Creta 3" Architectural	●		●				●			●			●		●												
Mini-Creta 6" Architectural & Pillar	●		●				●						●														
Prescott collection								●	●		●									●				●	●		
Raffinato smooth & polished collection										●														●	●		
Röcka									●		●				●			●									
Semma Split-Face	●		●			●	●						●														
Semma Polished			●												●												
Suprema - collection	●		●			●	●																				
STEPS, CAPS AND OVERLAY SYSTEM	sandlewood	grey	shale grey	charcoal	red & black	mojave beige	champlain grey	victoria	riviera	onyx black	rock garden brown	harvest gold	chestnut brown	autumn red	chocolate brown	ivory	azzurro	baja beige	olive	coral sands	smoked pine	hazelnut brandy	saugignon oak	greyed nickel	beige cream		
Aged Cap	●		●			●	●			●		●	●	●	●												
ARCHITECTURAL CAP	●		●			●	●			●		●	●	●	●												
Bali Travertina Cap									●		●					●											
BRANDON CAP	●		●				●			●			●														
Bullnose Cap	●		●			●	●			●		●	●		●												
BULLNOSE GRANDE CAP																								●	●		
Escala 3.5" Cap	●		●			●	●					●	●												●	●	
GRAPHIX CAP										●															●	●	
Piedimonte Caps									●	●	●																
Portofino Cap									●	●	●				●		●	●									
Prima 14" Cap Split Face	●		●			●	●					●	●	●													
Prima 14" Cap Polished			●							●			●												●	●	
Raffinato Caps - Smooth	●		●				●			●			●												●	●	
Stonedge 28" Pillar Cap										●					●			●									
York Collection									●	●	●				●	●											
Borealis step																					●	●	●				
Maya step									●		●				●			●									
Raffinato step - Smooth										●															●	●	
Röcka steps 48" & 60"									●		●				●			●									
York step									●		●				●			●									
Blu 45 mm Concrete Overlay System - Slate	●		●			●	●					●	●	●													
Blu 45 mm Concrete Overlay System - Smooth			●				●			●			●												●	●	
Venetian Concrete Overlay System - Slate	●		●			●	●					●	●	●													
Venetian Concrete Overlay System - Smooth			●				●						●												●	●	
EDGES	sandlewood	grey	shale grey	charcoal	red & black	mojave beige	champlain grey	victoria	riviera	onyx black	rock garden brown	harvest gold	chestnut brown	autumn red	chocolate brown	ivory	azzurro	baja beige	olive	coral sands	smoked pine	hazelnut brandy	saugignon oak	greyed nickel	beige cream		
Avignon	●		●			●	●					●	●														
Borealis																					●	●	●				
Brandon										●					●												
Pietra	●		●			●	●					●	●														
Raffinato Smooth										●															●	●	
Röcka									●		●				●			●									
Tundra	●		●			●	●					●	●														
OUTDOOR FEATURES	sandlewood	grey	shale grey	charcoal	red & black	mojave beige	champlain grey	victoria	riviera	onyx black	rock garden brown	harvest gold	chestnut brown	autumn red	chocolate brown	ivory	azzurro	baja beige	olive	coral sands	smoked pine	hazelnut brandy	saugignon oak	greyed nickel	beige cream		
Grill Island	●		●			●	●			●		●	●	●	●												
Manchester Foyer Fire Place			●									●															
BRANDON FIRE PIT			●										●														
Prescott fire pit									●		●																
Raffinato fire pit																									●	●	
Valencia fire pit	●		●			●	●					●	●	●													
Manchester Elite, pizza oven			●									●	●														
Manchester rustic, pizza oven			●									●															
Raffinato, pizza oven																								●	●		

● New ● Available ● Available 1/2 pallet





## COLOUR

Due to the inherent nature of printed literature and current digital media, Techo-Bloc cannot guarantee specific colour matching to printed representations of its colour swatches.

Each colour option is composed of a variety of darker & lighter tones. Natural ingredients such as granite are present within the recipe to allow for a range in tones, veining and textures from one stone to another. Therefore, colour samples shown are approximate representations of our standard colours and actual product colours may vary.

Final colour selection should be made at your local dealer from stocked product. Techo-Bloc always recommends immediately verifying the product and colour upon reception. If there are any discrepancies, contact your local dealer before continuing your project. Installation of the product constitutes your acceptance of the product as is.

## PROPER COLOUR DISTRIBUTION AND LAYING TECHNIQUES

Proper installation enhances the overall colour of pavement. Units should be randomly picked from at least two pallets when installing. This creates an attractive and subtle blending of colour.

## EFFLORESCENCE

This warranty does not apply to efflorescence. Efflorescence is a natural occurring process in all concrete products which sometimes appears in the form of a white powdery film on the pavement surface. Efflorescence is more perceivable in darker colours such as Onyx Black and Chocolate Brown as there is a higher level of contrast than with other blended colours. It does not, in any way, compromise the functionality or the structural integrity of the product. Although efflorescence cannot be prevented, it will wash off over time or can be cleaned with efflorescence cleaner. Techo-Bloc accepts no responsibility or liability for this condition.

## POLYMERIC HAZE

Polymeric haze from the use of polymeric joint sand may appear on your concrete products if the sand was not removed from the surface of the paver properly. This does not, in any way, affect the integrity of the product or your installation. The hazing will weather away naturally with time and rain. It can be removed with a specialized cleaner; you are advised to contact your contractor or the polymeric sand company used for advice on recommendations. Techo-Bloc accepts no responsibility or liability for this occurrence.

## CONSTRUCTION RESIDUE

A by-product of cutting with a saw is residue-filled water or concrete dust. Residue-filled water or re-hydrated dust can cling to the surface and leave a concrete stain. It is recommended to wash and remove the water or concrete dust from the surface of the pavers before it dries. Construction residue can also happen through soil disturbance or environmental elements. These contaminants should be removed immediately but do not affect the integrity of the product or your installation. Techo-Bloc accepts no responsibility or liability for these occurrences.

## COMPACTOR AND SNOW REMOVAL EQUIPMENT

Pavers with an embossed surface (high and low points) are more susceptible to scuff marks from vibratory plate compactors used in most concrete paver installations. Techo-Bloc recommends the use of a urethane mat between the plate and the paver surface during compacting. Contact your equipment supplier for more information about accessories for this purpose. Also, snow removal equipment should have the proper spacing, bumpers, and rubber blade guards to protect the surface of the pavers. Techo-Bloc is not responsible for damage caused by the misuse of compaction or snow removal equipment, which may leave scuff marks, or burns on pavers.



# TECHO-BLOC WARRANTY

---

**TECHO-BLOC IS PROUD TO CERTIFY** that our paving stones and retaining walls meet the latest industry standards in Canada and the United States of America. All Techo-Bloc manufactured landscape products comply with and surpass all applicable standards established by the CSA (*Canadian Standards Association*), ASTM (*American Society for Testing and Materials*) and the BNQ (*Bureau de normalisation du Québec*), recognized as the strictest standards throughout the world.

**TECHO-BLOC OFFERS A TRANSFERABLE LIFETIME WARRANTY** on the structural integrity of all paving stones and retaining wall stones it manufactures. It covers any disintegration and/or decomposition of the abovementioned products resulting from natural causes and the abnormal deterioration of the surface due to the use of sodium chloride (NaCl) such as de-icing salt.

**IF PRODUCTS PROVE DEFECTIVE**, we will replace these units. Techo-Bloc's responsibility is limited to its products only and not to the costs related to the installation of those products. Techo-Bloc will honor this transferable lifetime warranty with a proof of purchase such as an invoice or delivery slip.

## STONEDGE COLLECTION WARRANTY

**STONEDGE™ LANDSCAPE AND MASONRY PRODUCTS** are manufactured under the highest standards of quality and workmanship. This warranty is offered to the original Consumer Purchaser (Homeowner), for as long as they own their home. STONEDGE™ warrants that the product is free from defects in material and workmanship, and is in compliance with the specifications of the Canadian Standards Association and the American Standards for testing Materials.

---

**NOTE:** This warranty does not apply to any breakage, chipping, natural wear or other deterioration that were caused from improper design or installation which does not comply with applicable codes, the ICPI (*Interlocking Concrete Pavement Institute*), NCMA (*National Concrete Masonry Association*) and recognized work procedures. This warranty does not apply to any damage resulting from a natural disaster or from a deliberate and/or negligible act on the part of the purchaser, owner of the building, installer or any third party.

For industry information about efflorescence, polymeric haze or information pertaining to installation specifications, please visit [www.icpi.org](http://www.icpi.org) or [www.ncma.org](http://www.ncma.org).





# LAstra

## PORCELAIN TILES

REQUEST A LAstra BROCHURE ON [WWW.TECHO-BLOC.COM](http://WWW.TECHO-BLOC.COM)



# MASONRY

## FROM THE GROUND UP

REQUEST A MASONRY CATALOG ON [WWW.TECHO-BLOC.COM](http://WWW.TECHO-BLOC.COM)





# INDUSTRIAL COMMERCIAL INSTITUTIONAL

MORE THAN JUST PAVERS

VISIT [WWW.TECHO-BLOC.COM](http://WWW.TECHO-BLOC.COM) TO SEE ICI PRODUCTS



*Redefining*  
LANDSCAPE PRODUCTS



TOLL FREE : **1.877.832.4625**

*Serving over 130 specialty landscape retailers in Canada. Visit [techo-bloc.com](http://techo-bloc.com) to find the nearest one.*